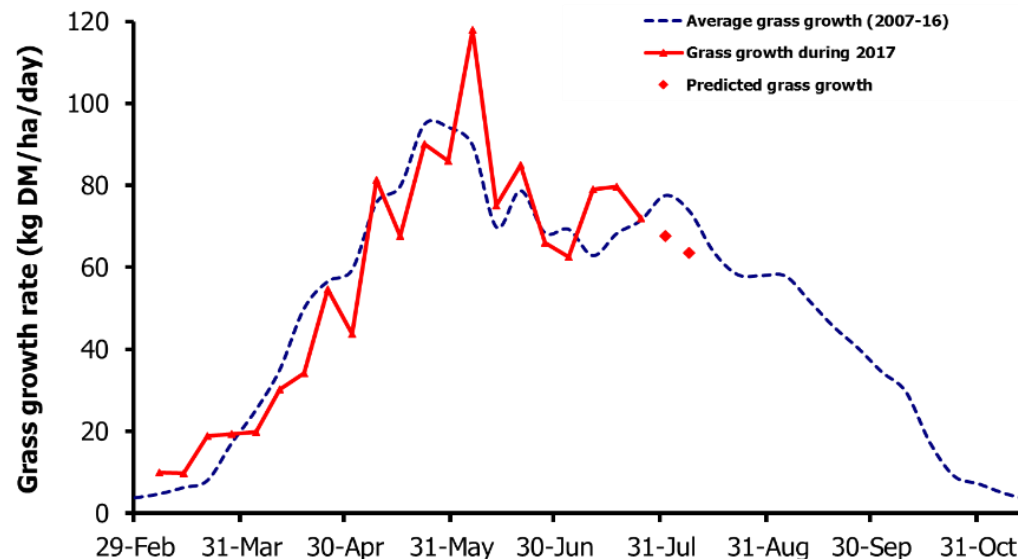
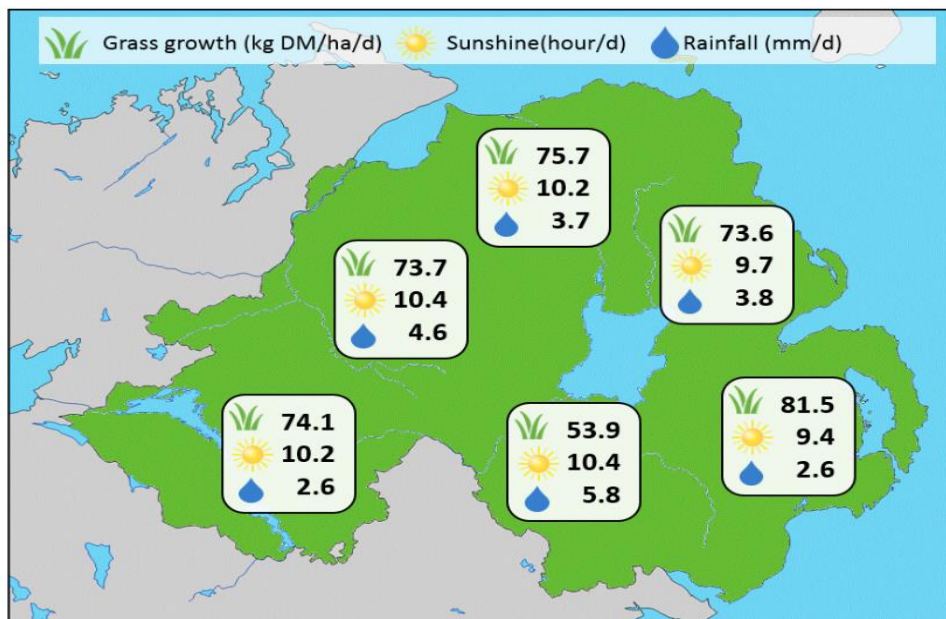


Week Beginning 24 July 2017



MANAGEMENT NOTES:

- Growth has remained above expected for the past few weeks, with good sunshine levels and some heavy rainfall events boosting growth on the drier GrassCheck sites.
- Across both plots and farms, grass fibre contents are above average, having a negative impact on grass ME and potentially impacting on animal performance.
- Ensuring good sward clean outs will help increase grass quality again. If residuals of 1500-1600kg DM/ha aren't being met, cutting out stemmy pastures when grass surpluses are available or topping can help improve quality in the next round.
- For the latest grass and weather info visit agrisearch.org/GrassCheck

Grass Growth (kg DM/ha/day)		Grass Quality	
		GrassCheck plots	On-farm
Dairy farm 7d average*	79.8		
Beef farm 7d average*	59.6		
GrassCheck plots#			
Previous 3 weeks	72.0		
Forecast 7 days	67.7		
Forecast 14 days	63.6		
		DM (%)	15.6
		ME (MJ/kg DM)	11.1
		CP (% DM)	17.3
		WSC (% DM)	12.3

*On-farm grass growth data supplied by Agrinet

GrassCheck plots receive 270kg N/ha/year

