

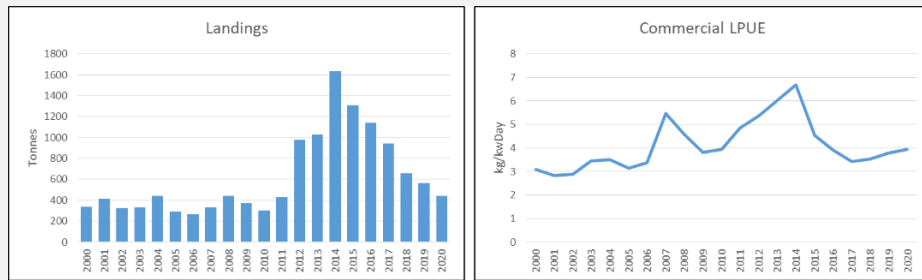
# King scallop, *Pecten maximus*

## ADVICE

Catches of scallops should be reduced in line with the survey index plus commercial declines in Landings Per Unit (LPUE) since 2014. This supports that catches in 2021, 2022 should be no more than 351 tonnes.

## FISHERY AND STOCK TRENDS

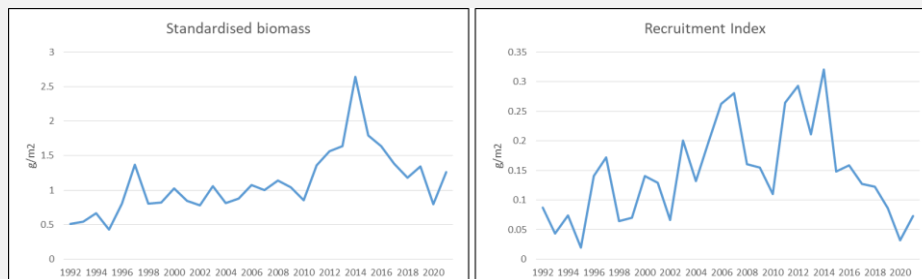
In 2020, 442 tonnes of scallops were landed by dredge by UK registered vessels from the ICES rectangles 37E3, 37E4, 38E4 and 39E3 and 39E4 (excluding the Clyde fishery). This is a reduction in landings from a peak in 2015. The LPUE series is derived from reported landings data. The LPUE trend has decreased from a peak in 2014 but between 2017 and 2020 has increased slightly.



**Fig 1.** Scallops in ICES rectangles: 37E3, 37E4, 38E4, 39E3, 39E4 (excluding Clyde fishery). Summary of the stock assessment. Catches, LPUE.

## Stock Survey

A survey has examined trends in scallop stocks within NI waters from 1992. The survey Index (standardized biomass caught during the survey) has decreased in recent years from a peak in 2014. The recruitment index (standardized catch of scallops below 106mm) has also decreased over this period. In 2021 a small increase was recorded for both standardized biomass and the recruitment index.



**Fig 2.** Scallop survey in ICES rectangles: 37E3, 37E4, 38E4, 39E3, 39E4 (excluding Clyde fishery). Summary of the stock assessment. Standardised biomass and recruitment index

**Table 1.** Scallops in ICES rectangles: 37E3, 37E4, 38E4, 39E3, 39E4. State of the stock relative to qualitative fishing pressure and survey index.

Fishing Pressure				Survey Index				
2018	2019	2020		2018	2019	2020	2021	
↓	↓	↓	Decreasing	↓	↑	↓	↑	Decreasing overall

## ADVICE BASIS

The Northern Ireland annual scallop survey is used to indicate stock trends. The advice is based on the ratio of the mean of the last two index values (Index A) and the mean of the three preceding values (Index B), multiplied by the recent average catch.

A precautionary reduction was applied for this stock as the index is estimated to have decreased by more than 20%.

**Table 2** Scallops in ICES rectangles: 37E3, 37E4, 38E4, 39E3, 39E4. Basis for advice.\*

Index A (2020 - 2021)	1.031
Index B (2017-2019)	1.303
Index ratio (A/B)	0.791
Recent catch for 2018 - 2020	555.23 t
Precautionary Reduction	Applied 0.8
Catch advice**	351 t
% Advice change ^	20.6 %

\* The figures in the table are rounded. Calculations were done with unrounded inputs and computed values may not match exactly when calculated using the rounded figures in the table.

\*\* [Mean recent catch (2018 – 2020)] × [Index Ratio] × [Precautionary buffer].

^ Advice change is based on the current advised catch compared to mean recent catch (2020).

## REFERENCE POINTS

The stock status relative to candidate reference points is unknown, therefore the pre-cautionary buffer was applied to the advice.

## QUALITY OF THE ASSESSMENT

The assessment is based on

- landings from NI waters (ICES rectangles 37E3, 37E4, 38E4, 39E3, 39E4) by NI registered vessels. These landings are made into NI, other UK and Irish ports.
- The annual AFBI scallop survey, from 1992 to 2021

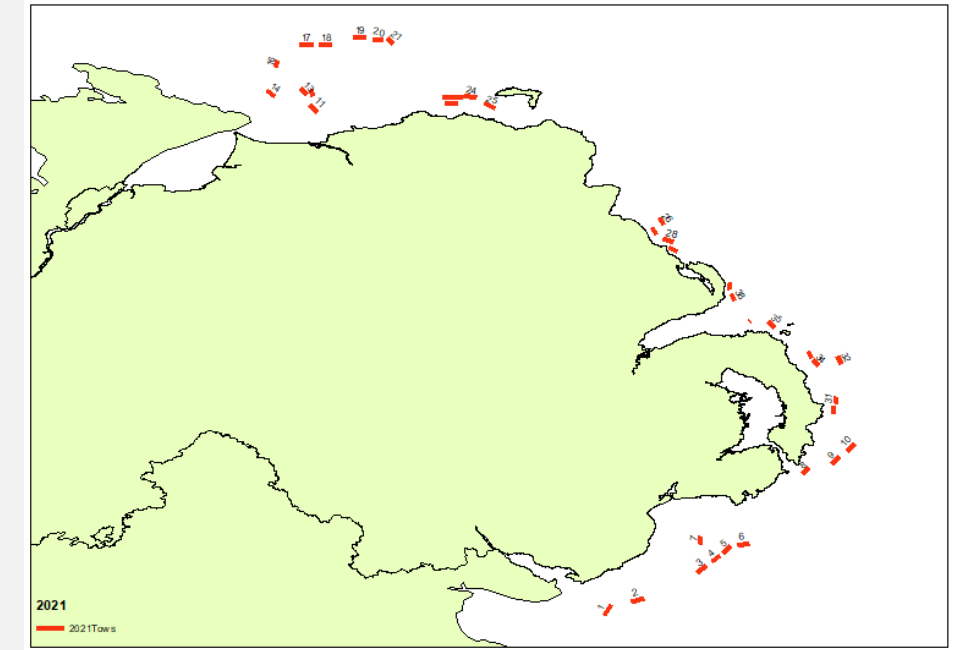
Survey data is only available for 39E3 and 39E4 from 2011 onwards when the survey was extended to cover area ICES area VIa (historically the survey concentrated on the Irish Sea only).

Commercial landings and effort information is derived from reported landings data from all UK vessels. This data is reliant on accurate self-reporting from commercial fishers. Methods for automated data collection would provide more detail on effort trends, including the duration over which pots are deployed.

## ISSUES RELEVANT FOR THE FISHERY

Commercial landings and effort information is derived from reported landings data from all UK vessels. Irish vessels may fish in the indicated ICES rectangles also but information is not recorded in this assessment.

2020 landings may have been impacted by Covid-19 impacting markets.



**Fig 2.** Location of tows carried out during the 2021 scallop survey.

## SUMMARY OF THE ASSESSMENT

**Table 3** *Pecten maximus* in ICES rectangles: 37E3, 37E4, 38E4, 39E3, 39E4 (excluding Clyde fishery). Assessment summary.

Year	Landings Tonnes	Effort kwDays	Survey standardised catch
2000	340.07	108238.76	0.965
2001	413.33	152708.47	0.817
2002	325.31	118123.8	0.762
2003	332.84	109645.1	1.056
2004	441.44	140868	0.814
2005	293.23	93492.3	0.878
2006	267.63	81503.38	1.078
2007	332.01	60768.74	1.002
2008	440.05	93123.09	1.141
2009	371.05	93517.88	1.041
2010	302.04	73395.5	0.850
2011	430.90	86627.31	1.360*
2012	979.00	183777.39	1.520
2013	1028.87	166088.4	1.640
2014	1633.60	261199.08	3.704
2015	1310.27	290699.52	1.793
2016	1138.25	281619.84	1.641
2017	942.81	263764.06	1.388
2018	658.20	180969.11	1.179
2019	565.47	149221.82	1.343
2020	442.05	109516.15	0.797
2021	-	-	1.264

\*Indicates the first year the survey was extended to cover ICES area VIa.