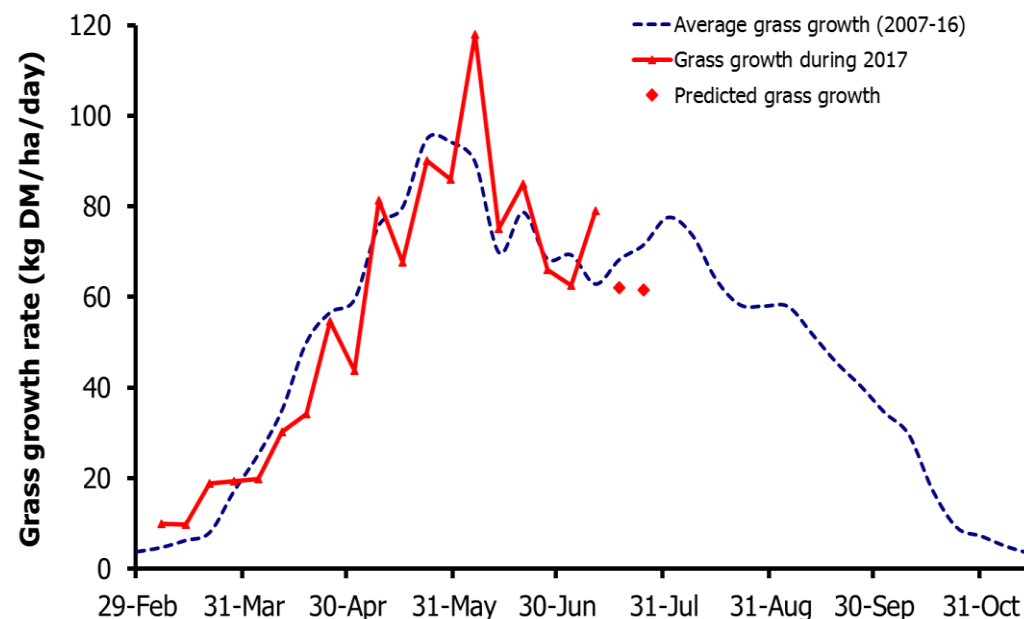
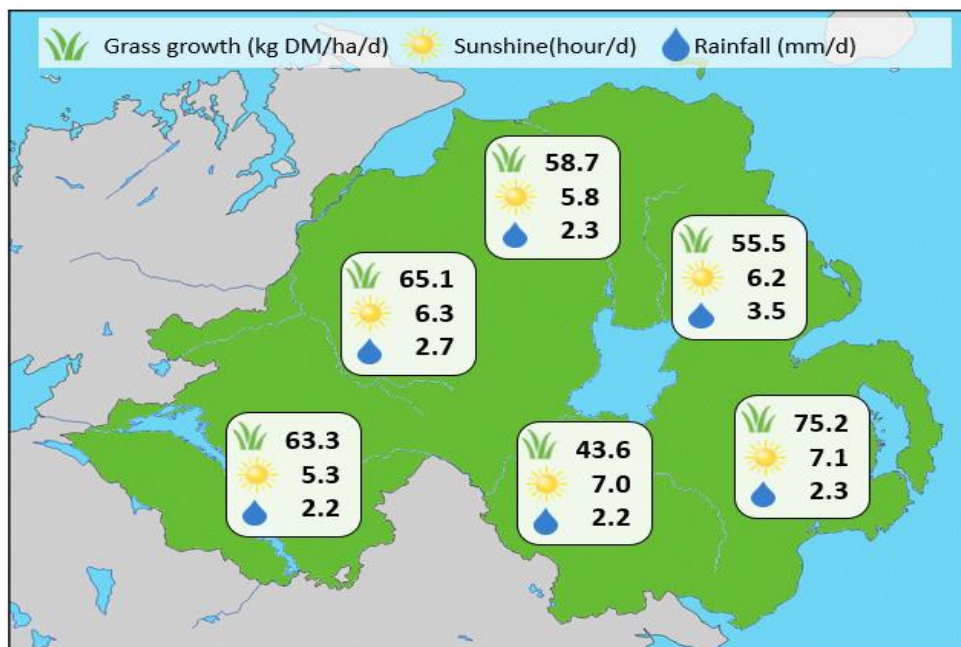


## Week Beginning 10 July 2017



Grass Growth (kg DM/ha/day)		Grass Quality	
		GrassCheck plots	On-farm
Dairy farm 7d average*	59.1	DM (%)	14.3
Beef farm 7d average*	64.8	ME (MJ/kg DM)	11.1
<b>GrassCheck plots#</b>		CP (% DM)	18.7
Previous 3 weeks	78.7	WSC (% DM)	10.1
Forecast 7 days	62.1		
Forecast 14 days	61.5		

### MANAGEMENT NOTES:

- Growth predictions are expected to fall in the next week to 62 kg DM/ha/day, in line with the long-term average.
- Grass dry matter contents have also remained below average due to wet conditions prevailing in the last week.
- In preparation for reseeds in August, review individual paddock performance this season and consider renewing underperforming pastures with low ryegrass content.
- For the latest grass and weather info visit [agrisearch.org/GrassCheck](http://agrisearch.org/GrassCheck)

\*On-farm grass growth data supplied by AgriNet

# GrassCheck plots receive 270 kgN/ha/year

