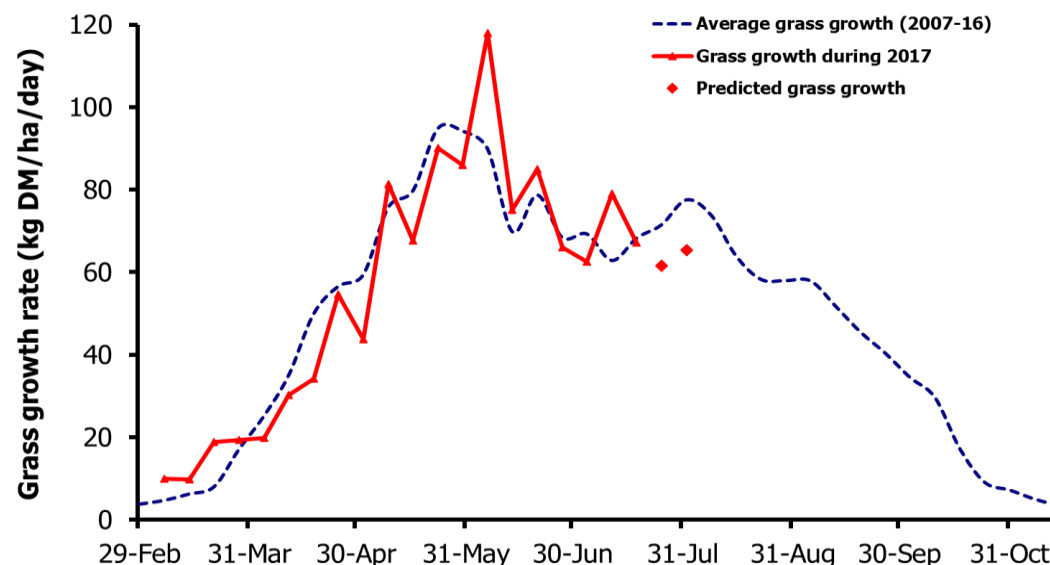
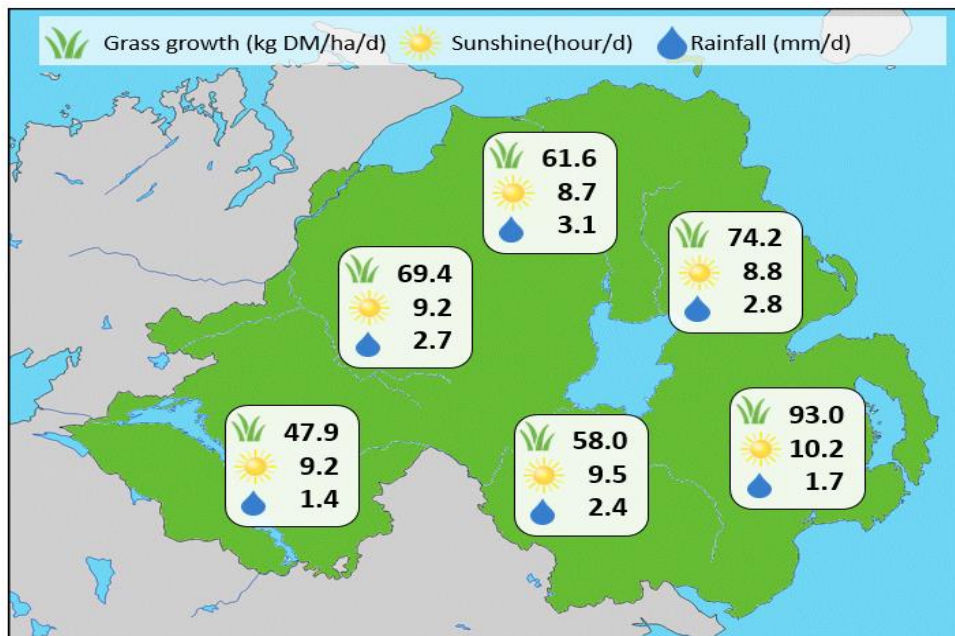


## Week Beginning 17 July 2017



### MANAGEMENT NOTES:

- The first half of the 2017 grass season has provided good growing conditions with 6.6t DM/ha produced between March and June.
- In addition, strong growth has been evident across the Province in the past week, remaining at 70kg DM/ha/day across beef and sheep farms, above expected for this time of year.
- Achieving good sward clean outs at this time of year can be challenging but doing so will impact positively on grass quality in coming rotations. If residuals of 1500-1600kg DM/ha aren't being met, cutting out stemmy pastures when grass surpluses are available or topping can help improve quality in the next round.
- For the latest grass and weather info visit [agrisearch.org/GrassCheck](http://agrisearch.org/GrassCheck)

Grass Growth (kg DM/ha/day)		Grass Quality	
		GrassCheck plots	On-farm
Dairy farm 7d average*	71.5		
Beef farm 7d average*	69.0		
<b>GrassCheck plots#</b>			
Previous 3 weeks	79.7		
Forecast 7 days	61.5		
Forecast 14 days	65.4		
		<b>DM (%)</b>	16.6
		<b>ME (MJ/kg DM)</b>	11.6
		<b>CP (% DM)</b>	17.7
		<b>WSC (% DM)</b>	13.2
			16.8
			10.9
			17.5
			13.3

\*On-farm grass growth data supplied by AgriNet

# GrassCheck plots receive 270 kgN/ha/year

