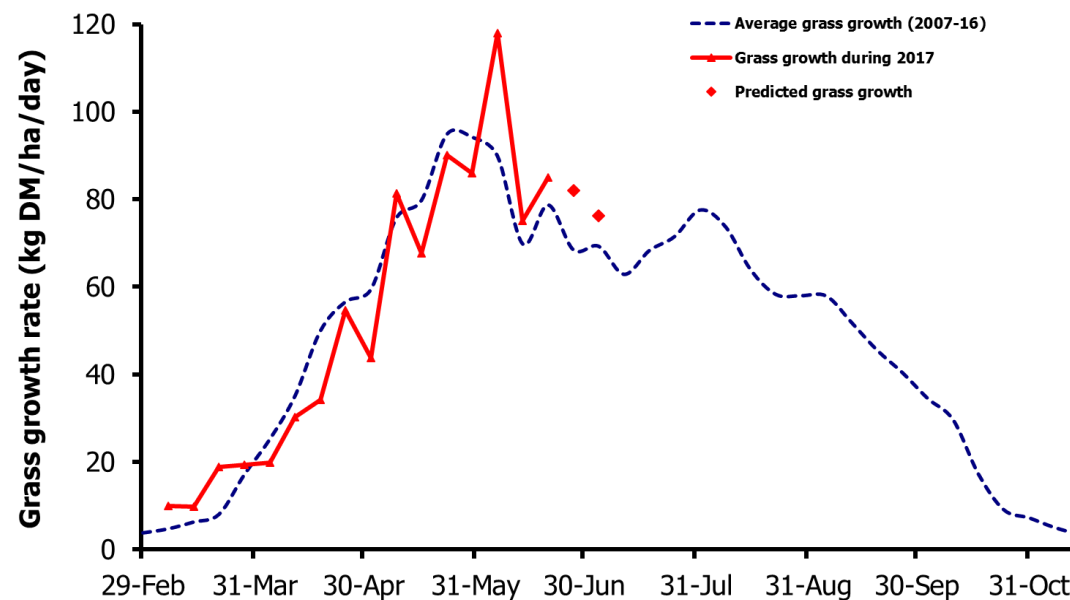
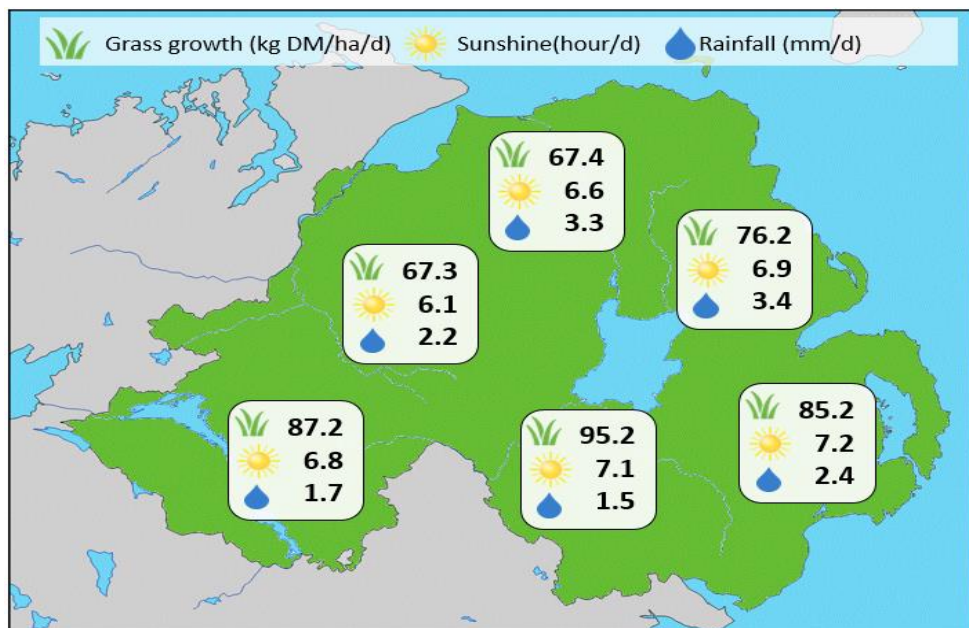


## Week Beginning 19 June 2017



### MANAGEMENT NOTES:

- Ground conditions and growth have improved significantly this week with higher sunshine hours and temperatures evident across the province.
- Growth is expected to remain relatively steady in coming weeks, although a drop in soil moisture levels may start to impact on growth in drier parts.
- Dry matter contents have started to increase again, providing good opportunity to maximise grass intake.
- Pre-mowing and removing high covers (above 3000kg DM/ha) quickly is essential to maintaining good grass quality.
- For the latest grass and weather info visit [agrisearch.org/GrassCheck](http://agrisearch.org/GrassCheck)

Grass Growth (kg DM/ha/day)	
Dairy farm 7d average*	83.5
Beef farm 7d average*	73.1
<b>GrassCheck plots#</b>	
Previous 3 weeks	85.0
Forecast 7 days	82.0
14 days	76.2

Grass Quality		
	GrassCheck plots	On-farm
DM (%)	17.1	15.6
ME (MJ/kg DM)	11.2	11.3
CP (% DM)	18.4	20.9
WSC (% DM)	12.7	10.1

\*On-farm grass growth data supplied by AgriNet

# GrassCheck plots receive 270 kg N/ha/year

