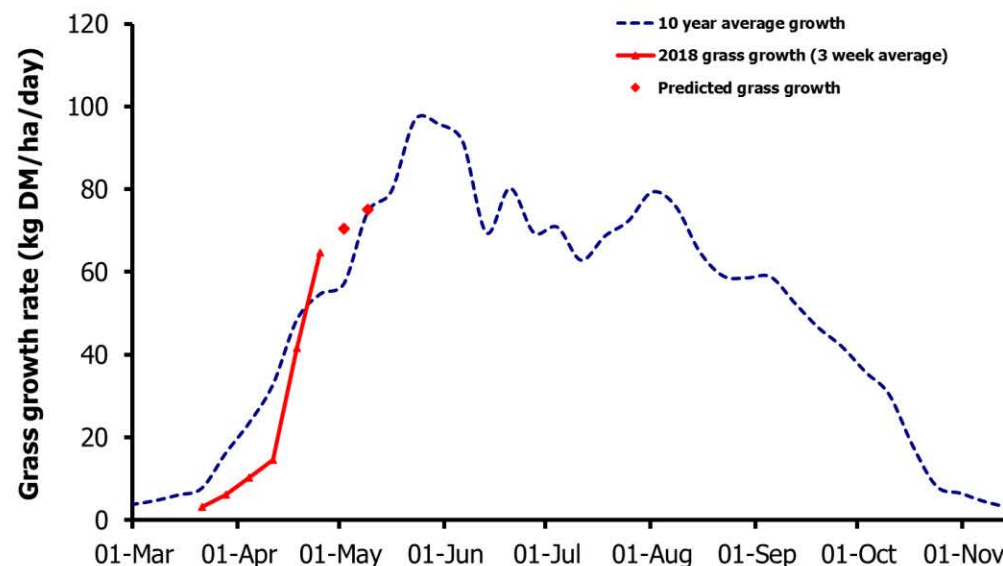
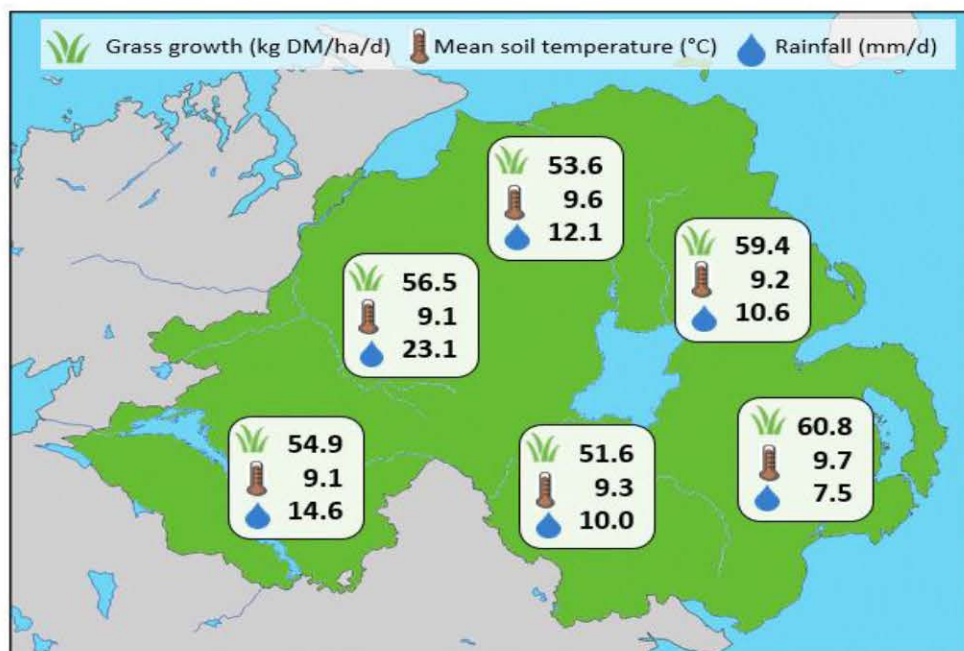


Week Beginning 30 April 2018



MANAGEMENT NOTES:

- Improved weather and ground conditions have led to a significant increase in grass growth again over the past week, with grass responding well to applications of fertiliser.
- It is vital to get stock out immediately to make the most of the high quality spring grass. Where ground conditions continue to improve, focus on achieving target grazing residuals to maintain quality into the next rotation.
- Farm covers are increasing each week. With good growth expected to continue, it will be important to take paddocks out for silage to maintain grass quality.
- For the latest grass and weather info visit agrisearch.org/GrassCheck

Weekly Grass Growth (kg DM/ha/day)		
GrassCheck plots	64.7	
Dairy farms*	69.4	
Beef & sheep farms*	50.8	
Forecast	7 day	70.5
	14 day	75.3

	Grass Quality	
	Plots	On-farm
DM (%)	17.8	21.3
ME (MJ/kg DM)	12.1	12.3
CP (% DM)	18.0	20.9
WSC (% DM)	18.3	16.3

*On-farm grass growth data supplied by AgriNet

GrassCheck plots receive 270 kgN/ha/year

