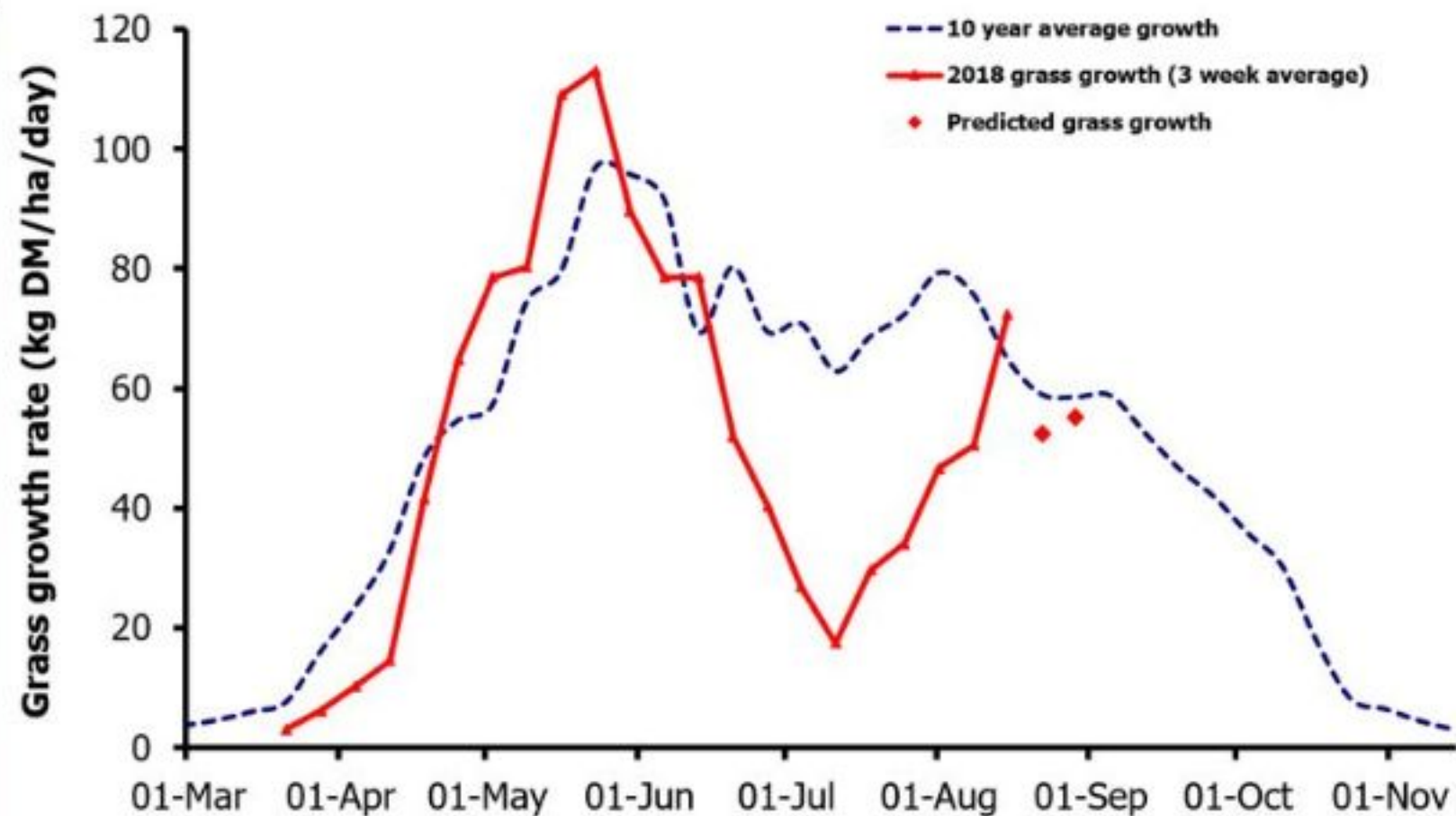
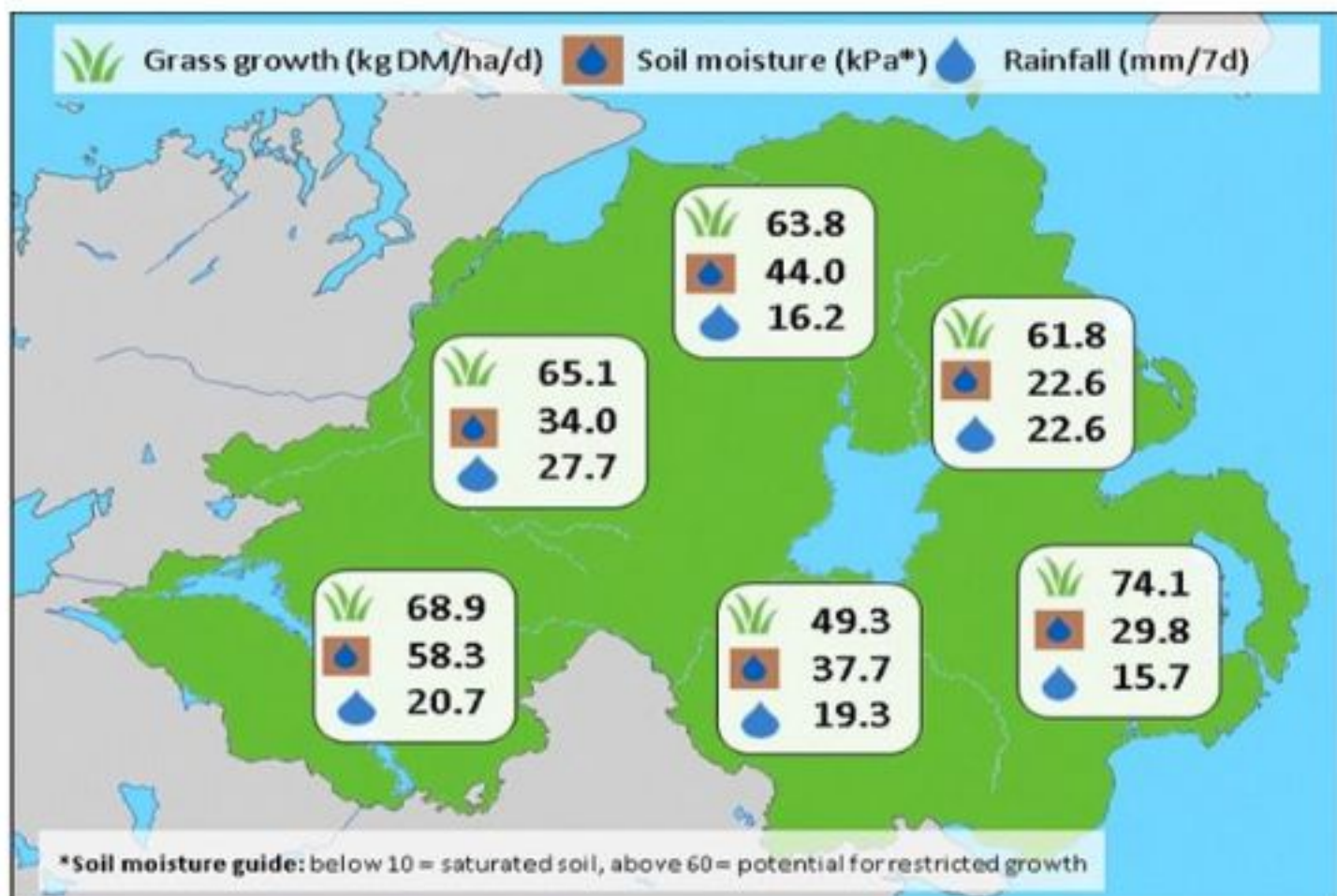


Week Beginning 20 August 2018



MANAGEMENT NOTES:

- Grass growth rates have continued to improve. Several GrassCheck pilot farms have recorded growths of over 100kgDM/ha/day. With cooler weather forecast this is expected to fall. With the current high growth there is an opportunity to make additional winter forage.
- Take out any paddocks which have covers of over 3,500 kgDM/ha. This should be done sooner rather than later to maximise regrowth and to allow for the application of artificial fertiliser before the closed period starts on 15th September.
- The autumn is an excellent time to build potash reserves either through slurry application or MoP / NK fertilisers. Use the CAFRE nutrient calculator (available through DAERA online services) to work out your potash requirements.

Weekly Grass Growth (kg DM/ha/day)		Grass Quality	
		Plots	On-farm
GrassCheck plots	72.4	DM (%)	13.3
Dairy farms*	76.9	ME (MJ/kg DM)	10.4
Beef & sheep farms*	62.0	CP (% DM)	17.0
Forecast	7 day	52.4	WSC (% DM)
	14 day	55.1	7.4
			7.7

*On-farm grass growth data supplied by AgriNet

#GrassCheck plots receive 270 kgN/ha/year

