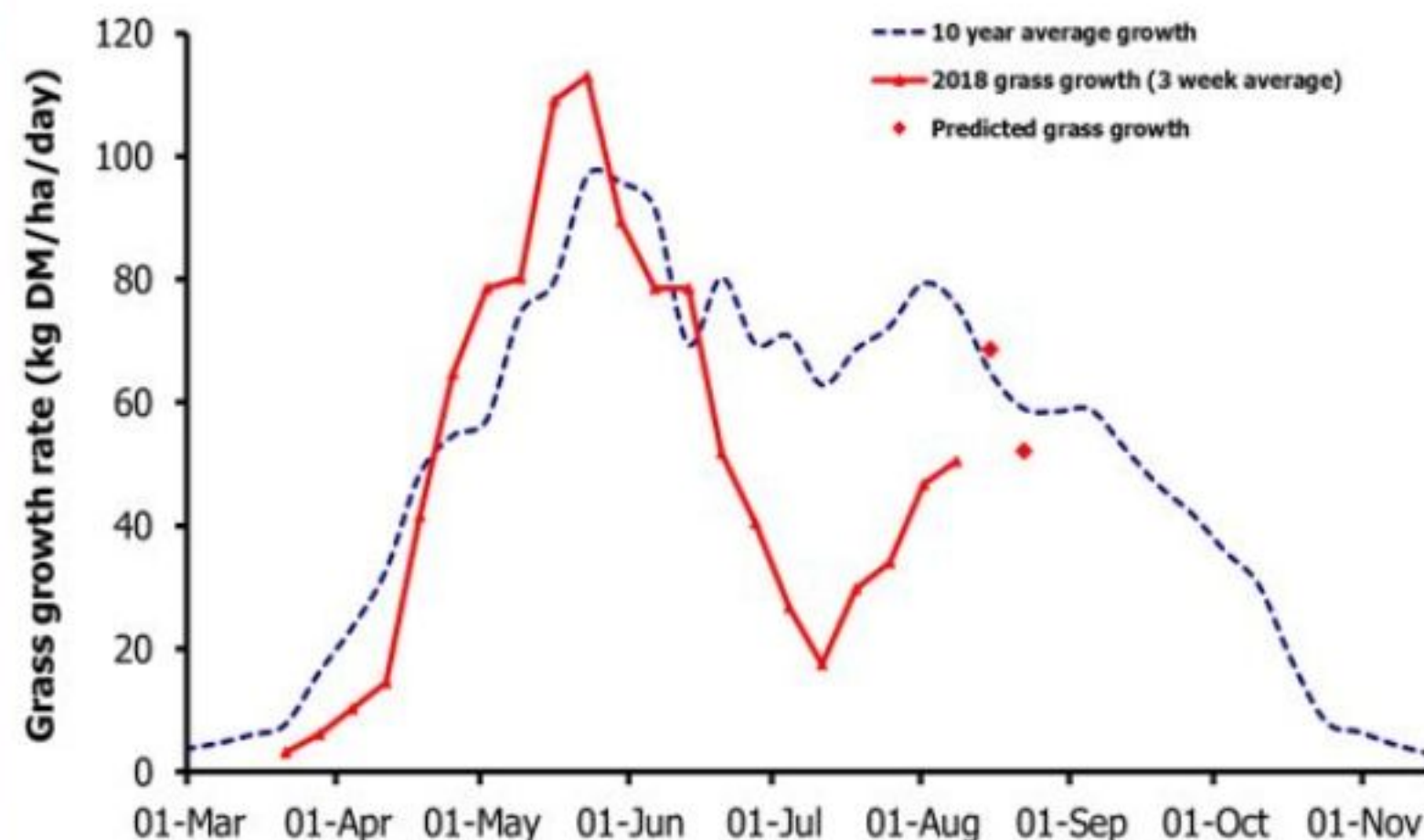
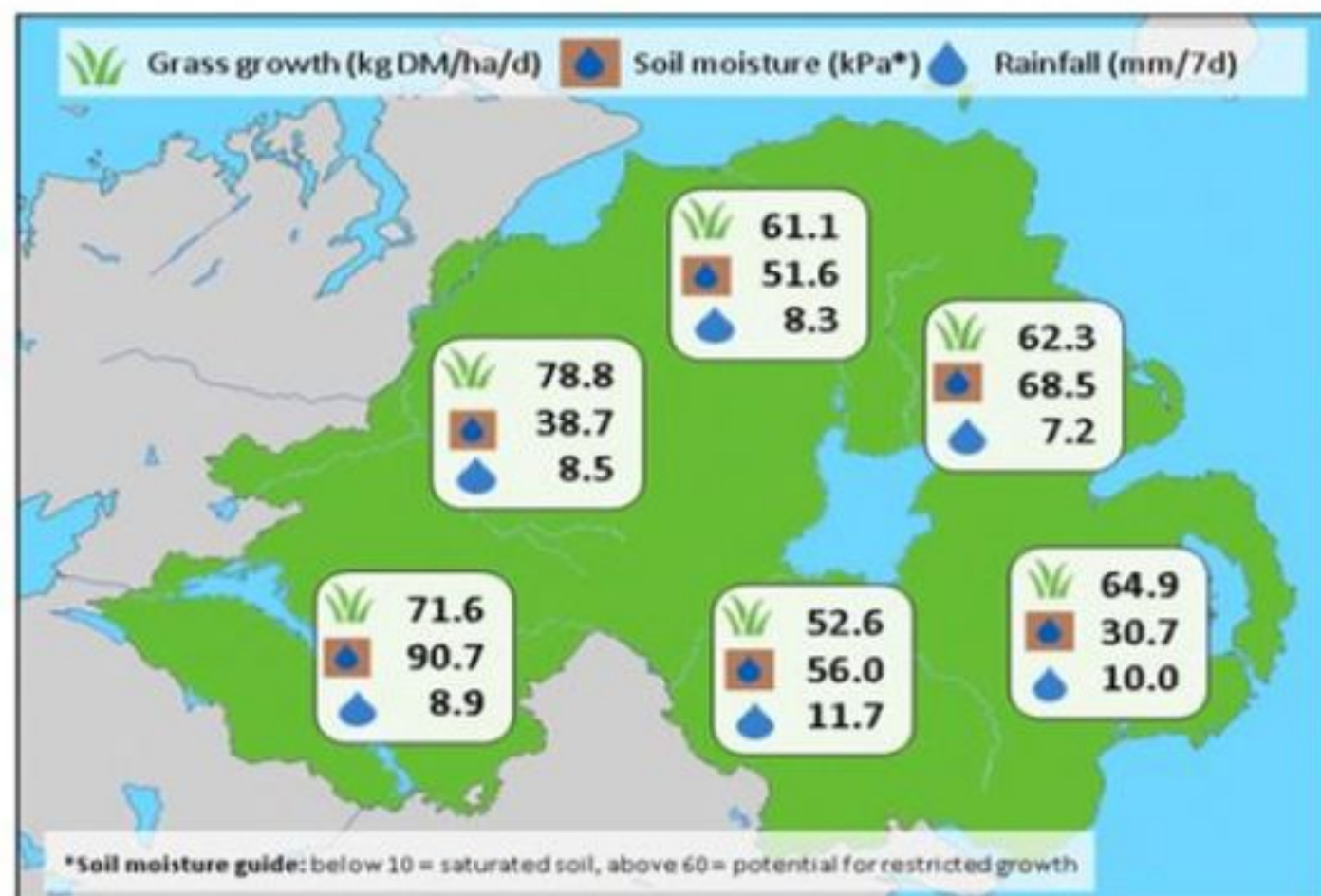


Week Beginning 13 August 2018



Weekly Grass Growth (kg DM/ha/day)		Grass Quality	
		Plots	On-farm
GrassCheck plots		50.5	
Dairy farms*		67.8	
Beef & sheep farms*		66.3	
Forecast	7 day	68.6	
	14 day	52.2	
		DM (%)	15.4
		ME (MJ/kg DM)	10.9
		CP (% DM)	17.2
		WSC (% DM)	11.3

## MANAGEMENT NOTES:

- Grass growth rates continue to improve and with warmer temperatures this week growth is expected to return to the seasonal norm. Growth remains particularly strong in the west providing opportunities to boost winter forage stores.
- With good growth returning, there are opportunities to apply slurry to maximise grass growth potential in the autumn period and build potash stores.
- Calculate current and projected grass supply and demand to maximise use of grass during the remainder of the grazing season.
- A series of GrassCheck farm walks are scheduled to take place on 16, 21 and 29 August. Visit [agrisearch.org](http://agrisearch.org) for more details.

\*On-farm grass growth data supplied by AgriNet

\*GrassCheck plots receive 270 kgN/ha/year

