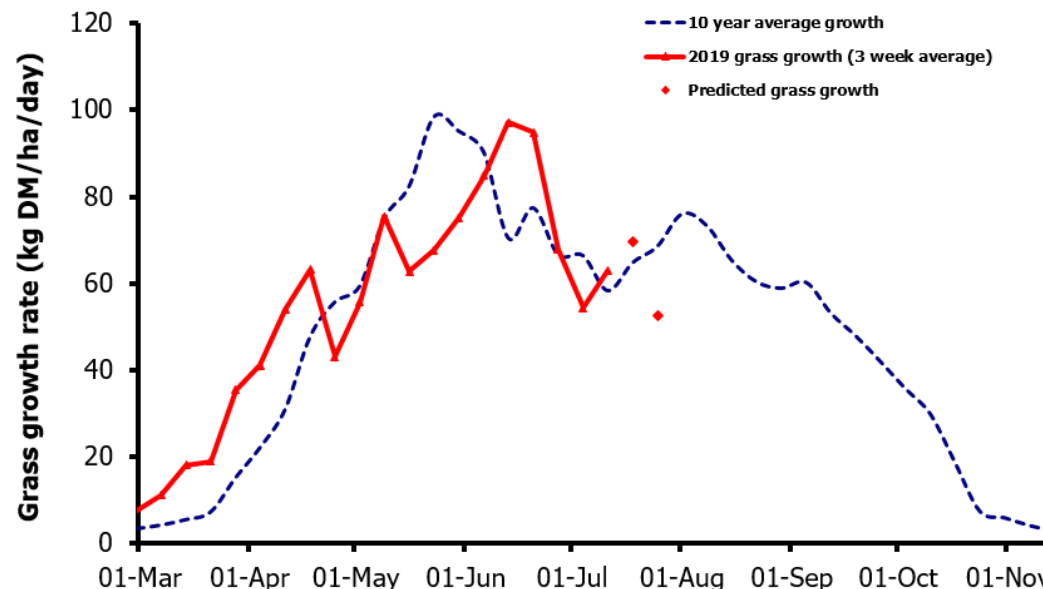
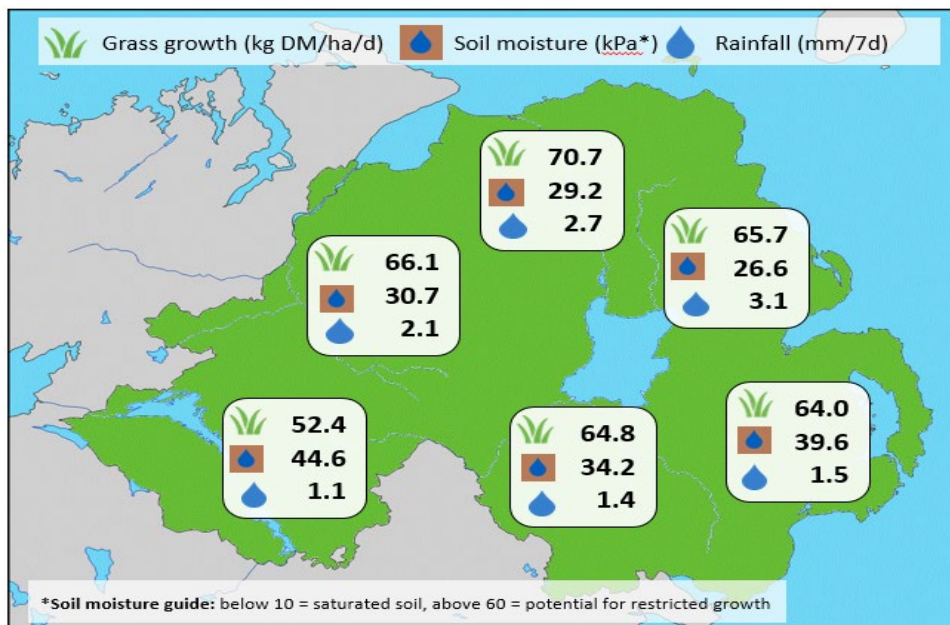


## Week Beginning 8 July 2019



### MANAGEMENT NOTES:

- Grass growth rates across NI have been more consistent this week. Average grass growth rates of 62.0-69.2 kg DM/ha/d on GrassCheck plots and farms are currently sitting above the seasonal average of 58.3 kg DM/ha/d.
- After a drier week, the warm weather is forecast to continue but with more rain showers arriving. This is expected to lift grass growth rates slightly over the next 7 days, with plenty of sunshine and good soil conditions for grass growth.
- Grass CP values of 16.6 % on farms and plots should be adequate for grazing stock, but grass ME values have fallen back slightly this week. Grass quality can vary significantly through the season, so review animal needs vs grass intakes and quality regularly, and adjust supplementary feeding if needed.

Weekly Grass Growth (kg DM/ha/day)		
GrassCheck plots		62.8
Dairy farms*		69.2
Beef & sheep farms*		62.0
Forecast	7 day	69.6
	14 day	52.6

Grass Quality		
	Plots	On-farm
DM (%)	17.7	18.4
ME (MJ/kg DM)	11.5	11.3
CP (% DM)	16.6	16.6
WSC (% DM)	16.3	15.3

\*On-farm grass growth data supplied by AgriNet

# GrassCheck plots receive 270 kgN/ha/year

