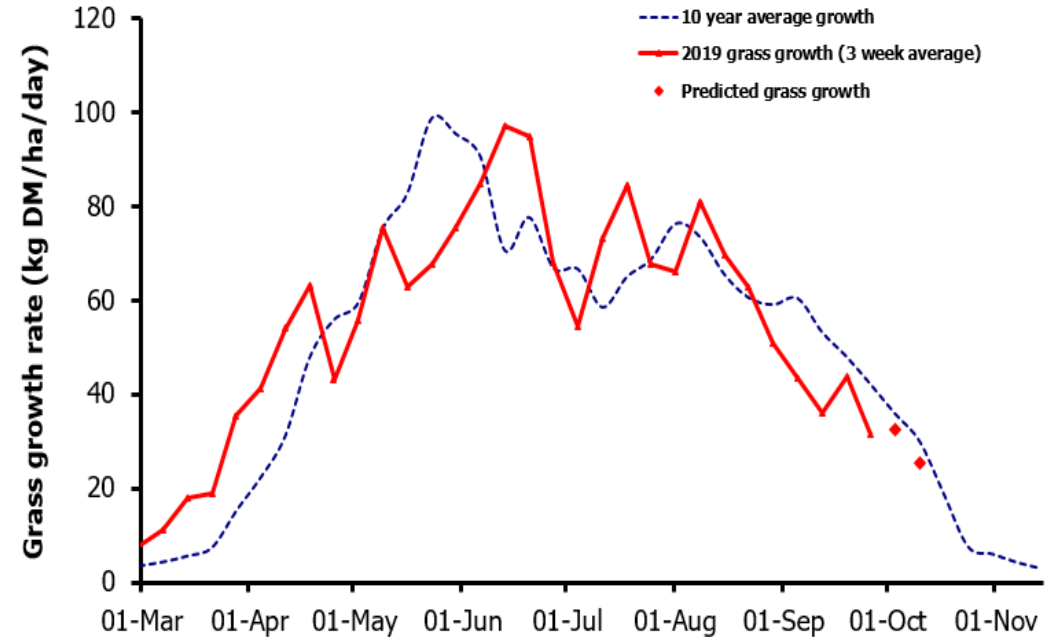
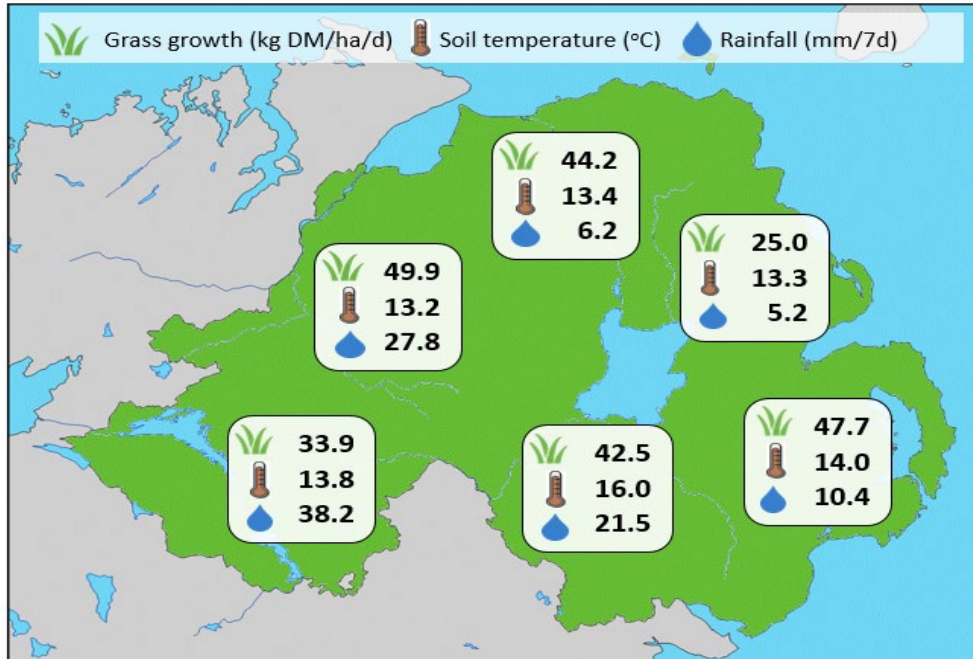


## Week Beginning 23 September 2019



Weekly Grass Growth (kg DM/ha/day)		
GrassCheck plots		31.5
Dairy farms*		52.7
Beef & sheep farms*		37.3
Forecast	7 day	32.5
	14 day	25.3

	Grass Quality	
	Plots	On-farm
DM (%)	15.3	16.5
ME (MJ/kg DM)	11.0	10.9
CP (% DM)	20.0	17.8
WSC (% DM)	10.8	12.2

### MANAGEMENT NOTES:

- Recent good weather, and for some a good response to organic fertiliser applications, has maintained on-farm grass growth rates this week at an average of 45.0 kg DM/ha/d, just above the late-September average of 41.9. Plot growth is lower this week, with no N applied after the end of August.
- As the weather cools low soil temperatures will begin to have a bigger effect on grass growth towards the end of the growing season, and soil moisture readings have now been replaced by average soil temperatures in this bulletin.
- With wetter weather, grass DM and animal intakes are likely to fall. Review supplementary feed and M+ values often to ensure stock requirements are met.

\*On-farm grass growth data supplied by AgriNet

# GrassCheck plots receive 270 kgN/ha/year

