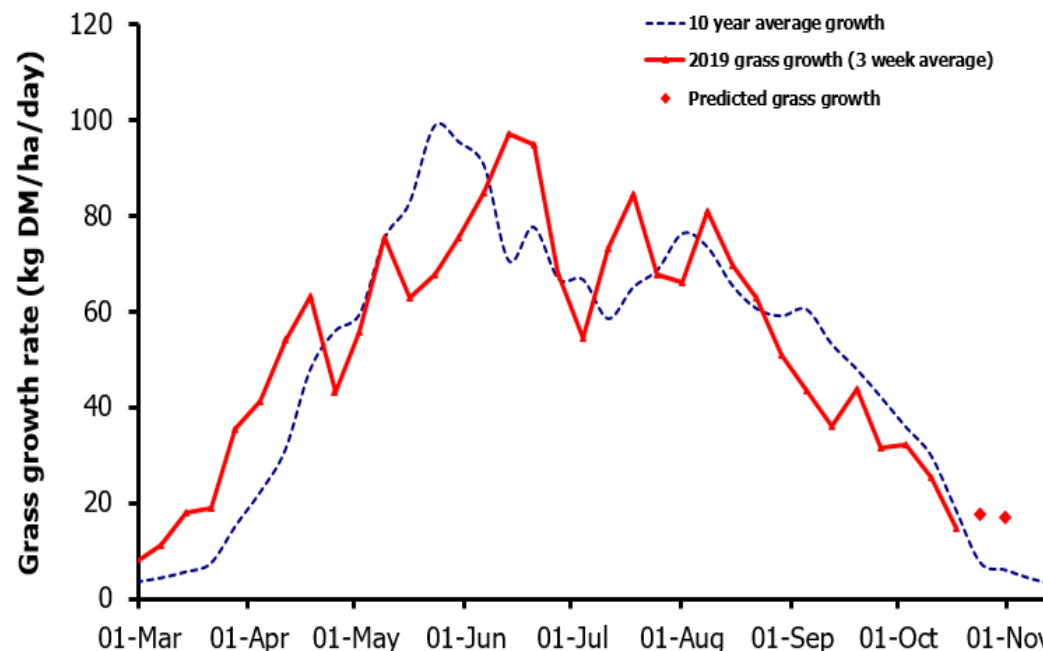
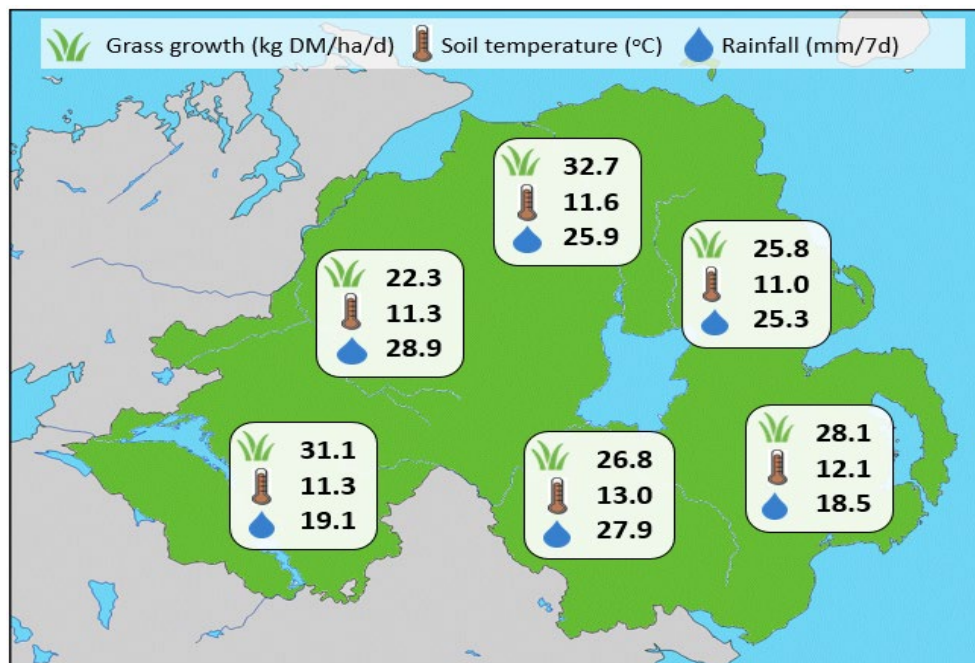


## Week Beginning 14 October 2019



Weekly Grass Growth (kg DM/ha/day)		
GrassCheck plots	14.7	
Dairy farms*	30.9	
Beef & sheep farms*	24.4	
Forecast	7 day	17.6
	14 day	16.8

	Grass Quality	
	Plots	On-farm
DM (%)	14.9	15.5
ME (MJ/kg DM)	11.1	11.2
CP (% DM)	19.4	20.3
WSC (% DM)	11.7	11.2

### MANAGEMENT NOTES:

- Grass growth on GrassCheck plots remains around expected (14.7 vs 18.6 kg DM/ha/d) as we approach the end of the grazing season for many farms. On-farm grass growth rates are still supported by the additional nutrients supplied in recent slurry dressings.
- More settled weather in the current forecasts sees grass growth predicted to steady around 17 kg DM/ha/d over the next 14 days.
- Grass DM content at 14.9-15.5% is around expected given the recent wet weather but grass ME and CP values from samples taken across GrassCheck plots and farms show autumn grass quality remains strong across NI.

\*On-farm grass growth data supplied by AgriNet

# GrassCheck plots receive 270 kgN/ha/year

