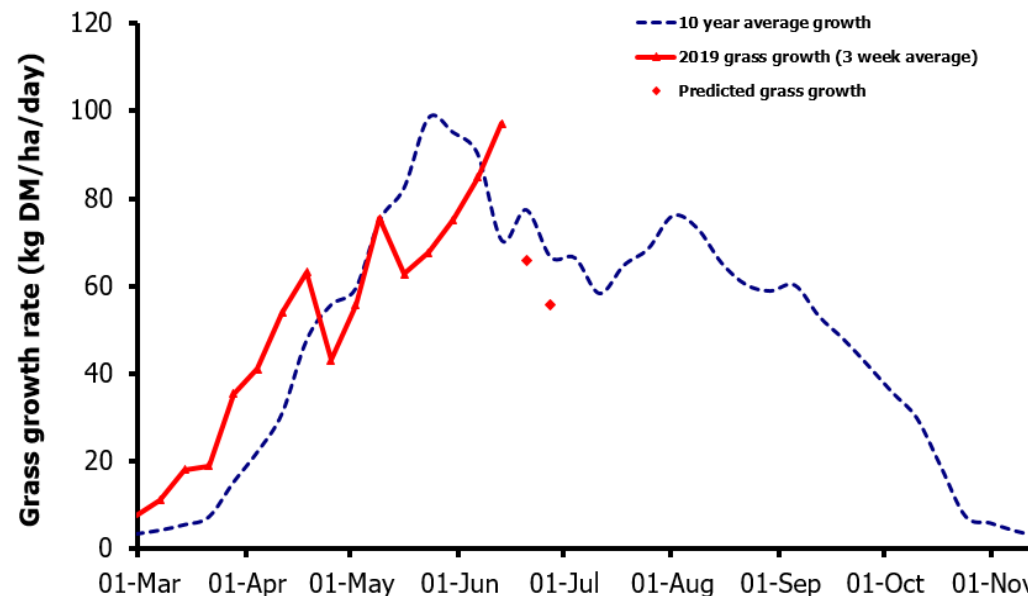
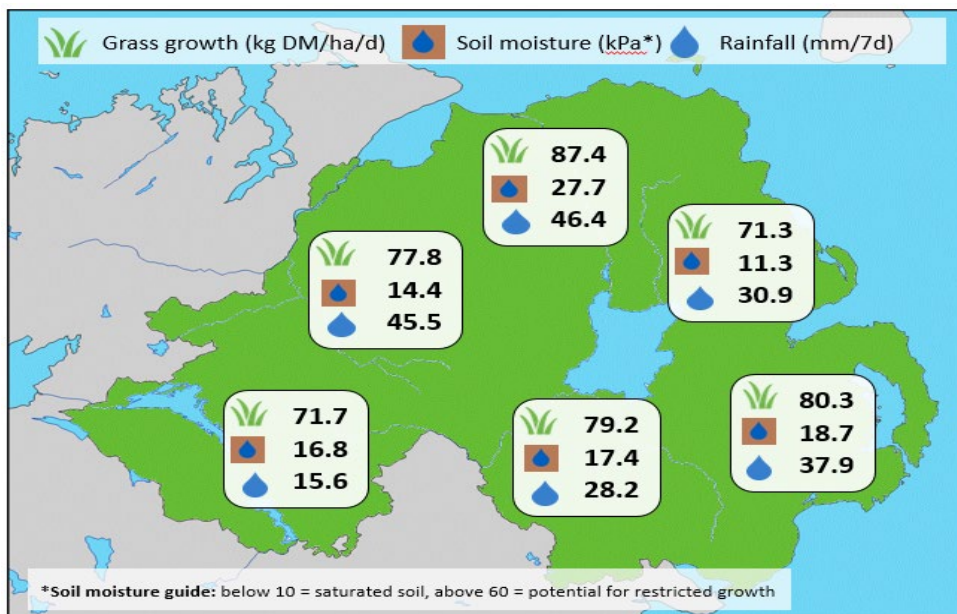


Week Beginning 10 June 2019



MANAGEMENT NOTES:

- Grass growth recorded on plots this week is as predicted at 97 kg DM/ha/d. Current 7 and 14-day forecasts predict declining growth rates to below the long-term averages for mid/late June due to the impact of heading and forecast lower solar radiation.
- May 2019 saw below average yields at 2.0, 2.3 and 2.1 t DM/ha on GrassCheck plots, Dairy and Beef/Sheep farms respectively, vs. the long-term average of 2.7 t DM/ha for May. However, plot yields to-date this season are 0.4 t DM/ha above the long-term average of 4.3 t DM/ha due to favourable early growth this year.
- Grass quality is beginning to fall as most swards reach heading. Consider pre-mowing swards to maintain grass quality for the next rotation.

Weekly Grass Growth (kg DM/ha/day)		
GrassCheck plots		97.1
Dairy farms*		71.5
Beef & sheep farms*		76.8
Forecast	7 day	65.7
	14 day	55.6

	Grass Quality	
	Plots	On-farm
DM (%)	16.1	15.1
ME (MJ/kg DM)	10.8	11.3
CP (% DM)	14.6	18.1
WSC (% DM)	15.7	12.7

*On-farm grass growth data supplied by AgriNet

GrassCheck plots receive 270 kgN/ha/year

