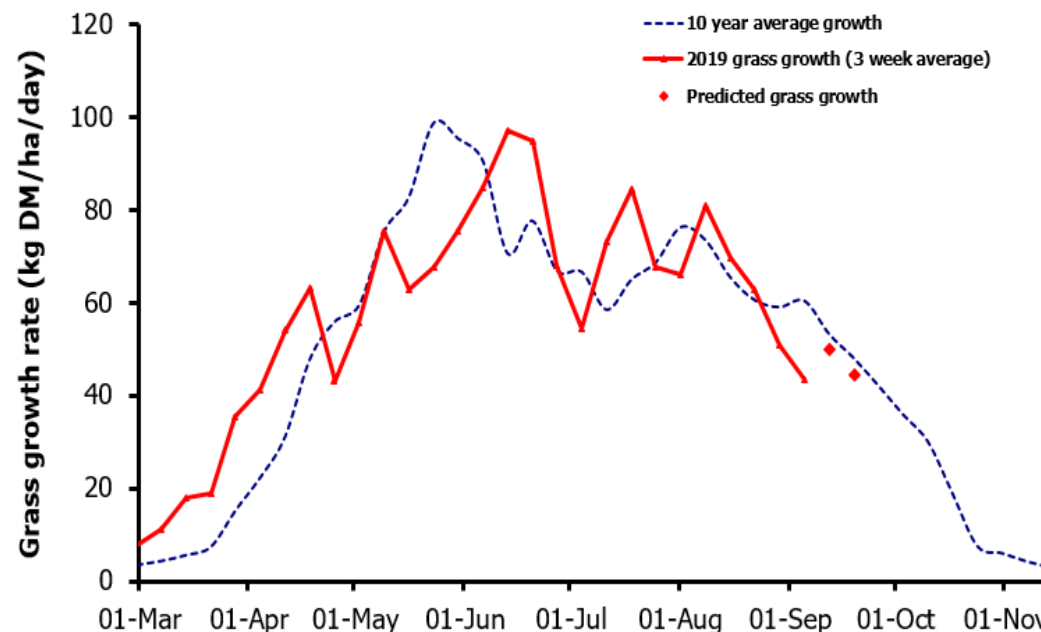
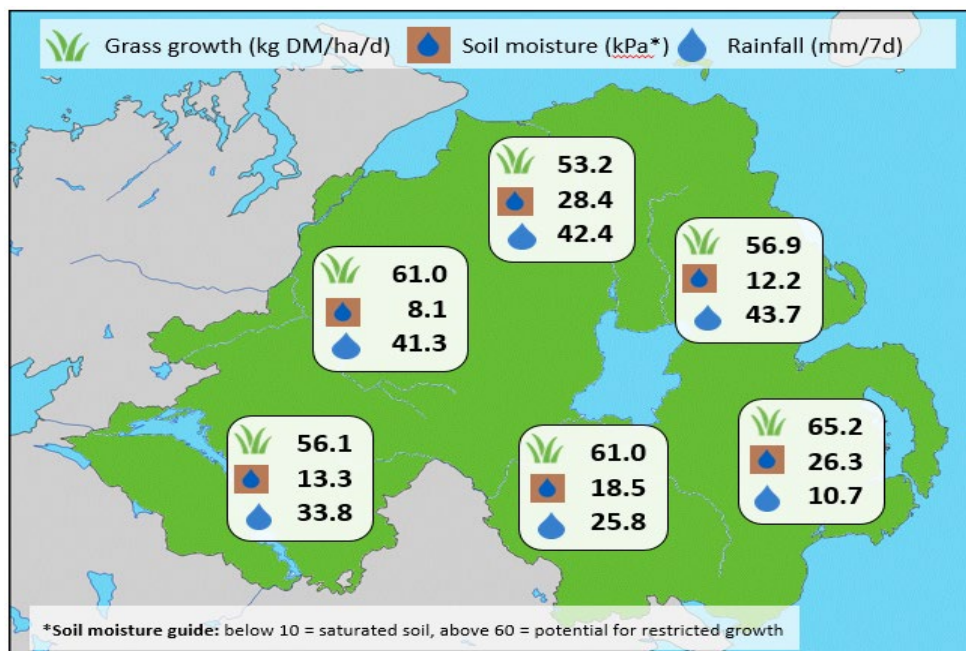


## Week Beginning 02 September 2019



Weekly Grass Growth (kg DM/ha/day)		
GrassCheck plots		43.3
Dairy farms*		57.0
Beef & sheep farms*		63.3
Forecast	7 day	49.9
	14 day	44.4

	Grass Quality	
	Plots	On-farm
<b>DM</b> (%)	13.6	16.7
<b>ME</b> (MJ/kg DM)	11.1	11.1
<b>CP</b> (% DM)	19.5	17.6
<b>WSC</b> (% DM)	12.1	13.0

### MANAGEMENT NOTES:

- Growth on the GrassCheck plots has declined significantly in the last 2 weeks, currently 43.3 kg DM/ha/d. Low average air temperatures and limited sunshine hours are driving down grass growth earlier than would normally be expected.
- On-farm growth rates are higher, and closer to the expected 60.2 kg DM/ha/d growth rate for the beginning of autumn, though based on current forecasts and long-term trends grass growth will continue declining towards the winter.
- With summer at an end, now is a good time to be reviewing your autumn closing plans. Monitor grass growth regularly to assess when you will need to begin closing up paddocks to allow sufficient covers to build ready for spring grazing.

\*On-farm grass growth data supplied by AgriNet

# GrassCheck plots receive 270 kgN/ha/year

