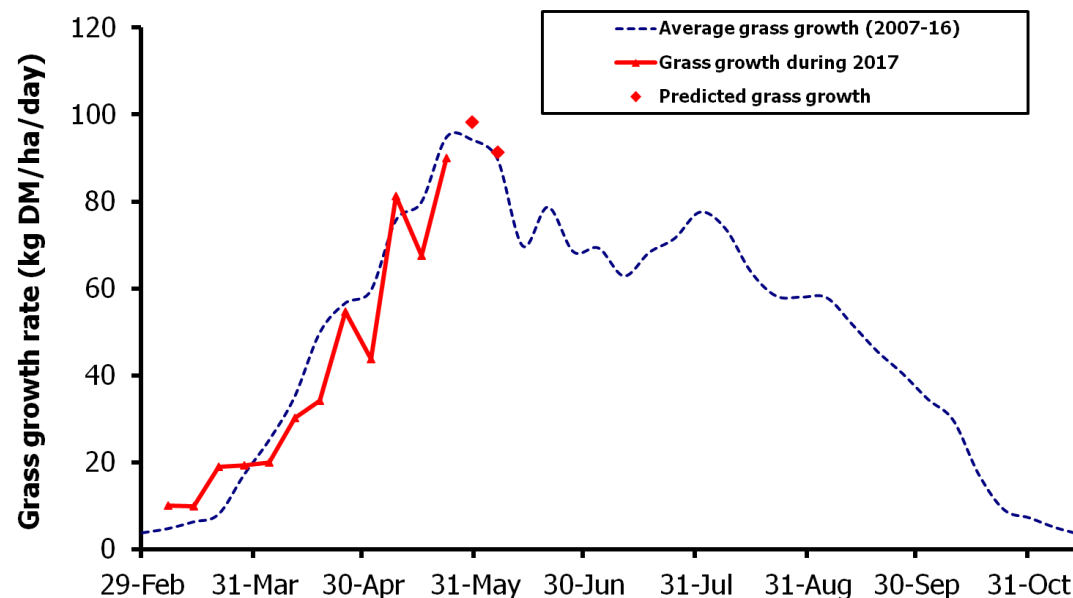
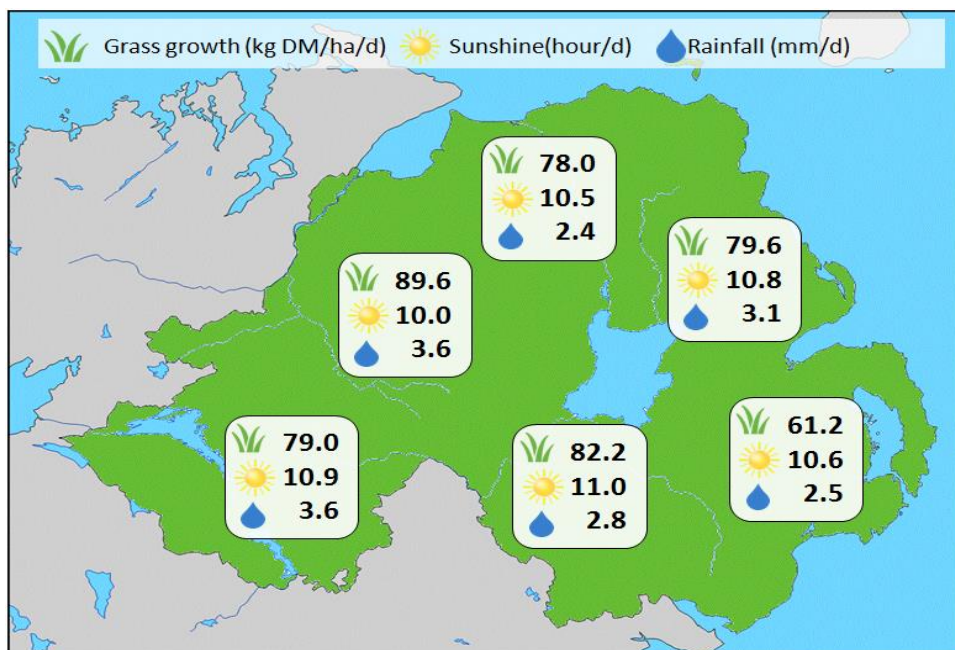


Week Beginning 22 May 2017



MANAGEMENT NOTES:

- Most areas have received over 10mm of rain in the past week, causing soil moisture levels to rise reducing any negative impact of dry soils on grass growth.
- Weather conditions have been similar across counties with only small differences apparent in soil temperature (average 12.2°C), rainfall and sunshine hours.
- Although grass ME contents have dropped slightly as grass enters the reproductive phase, dry matter contents have recovered this week again, helping maintain animal energy intake.
- Ensure any paddocks taken out of rotation are cut as close to their expected grazing date as possible to avoid slow re-growth and deficits later on.
- For the latest grass and weather info visit agrisearch.org/GrassCheck

Grass Growth (kg DM/ha/day)		Grass Quality	
		GrassCheck plots	On-farm
Dairy farm 7d average*	89.3	DM (%)	18.8
Beef farm 7d average*	64.1	ME (MJ/kg DM)	11.0
GrassCheck plots#		CP (% DM)	14.1
Previous 3 weeks	90.0	WSC (% DM)	15.3
Forecast 7 days	98.2		
Forecast 14 days	91.3		

*On-farm grass growth data supplied by AgriNet

GrassCheck plots receive 270 kgN/ha/year

