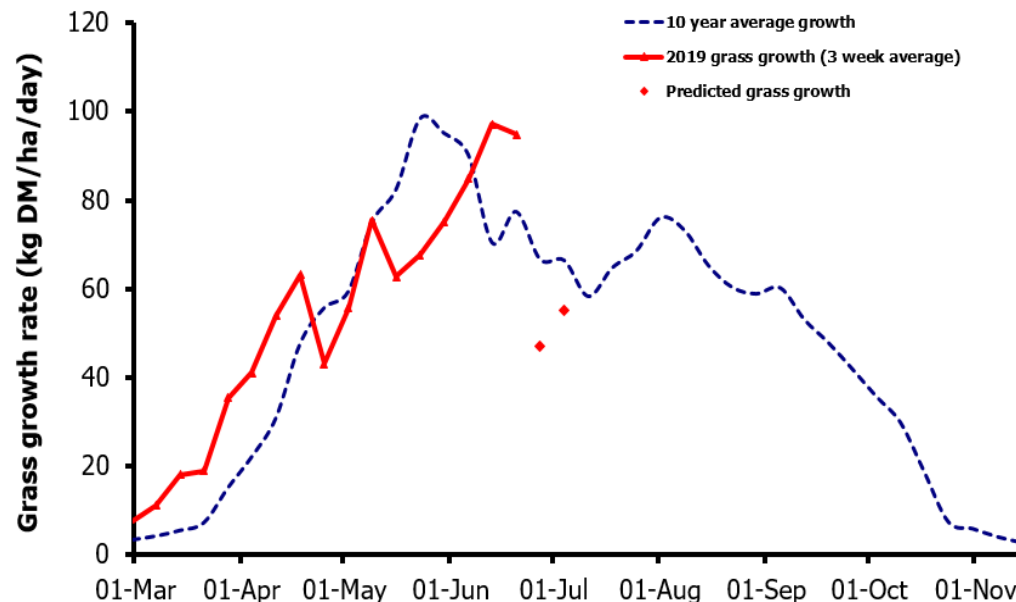
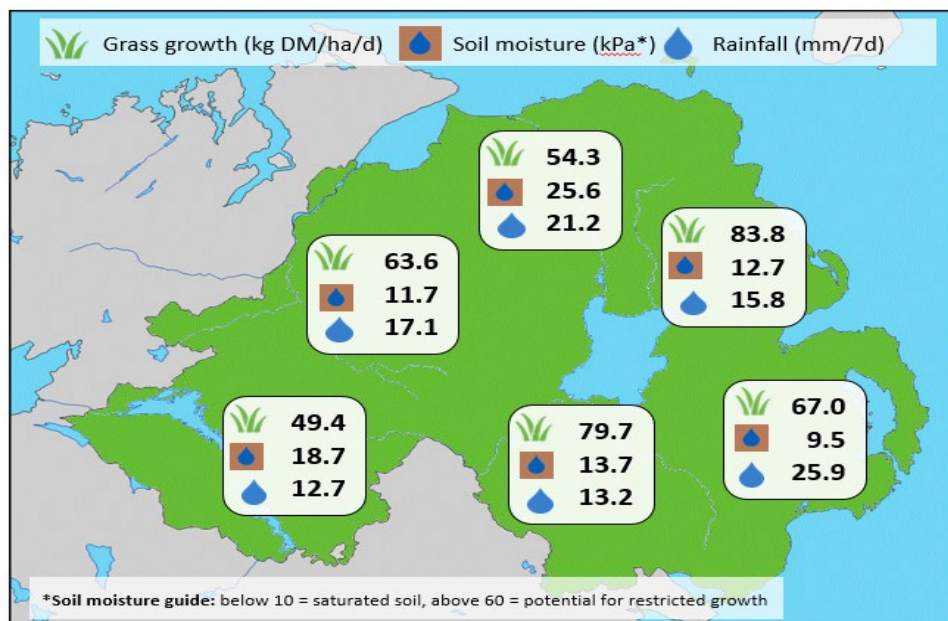


Week Beginning 17 June 2019



MANAGEMENT NOTES:

- Growth recorded across GrassCheck farms this week was 65.5 kg DM/ha/d and very close to the predicted growth figures for this week. Plot average 3-week growth rates are well in excess of model predictions this week, likely as a lag-effect from very good growth rates seen earlier in the plot measurement 3-week rotation. Current 7 and 14-day forecasts still show declining growth rates because of heavy cloud cover and below-average air temperatures forecast.
- Heavy rain has made for challenging grazing conditions across much of NI, with more rainstorms for some in the long-term forecast. Make efforts to minimise soil damage by using different tracks and gateways when moving animals, and by back-fencing grazed-out areas.

Weekly Grass Growth (kg DM/ha/day)		
GrassCheck plots		94.8
Dairy farms*		69.6
Beef & sheep farms*		62.5
Forecast	7 day	47.1
	14 day	55.0

Grass Quality		
	Plots	On-farm
DM (%)	15.3	18.2
ME (MJ/kg DM)	11.2	11.2
CP (% DM)	16.7	14.9
WSC (% DM)	14.9	16.2

*On-farm grass growth data supplied by AgriNet

GrassCheck plots receive 270 kgN/ha/year



@GrassCheck