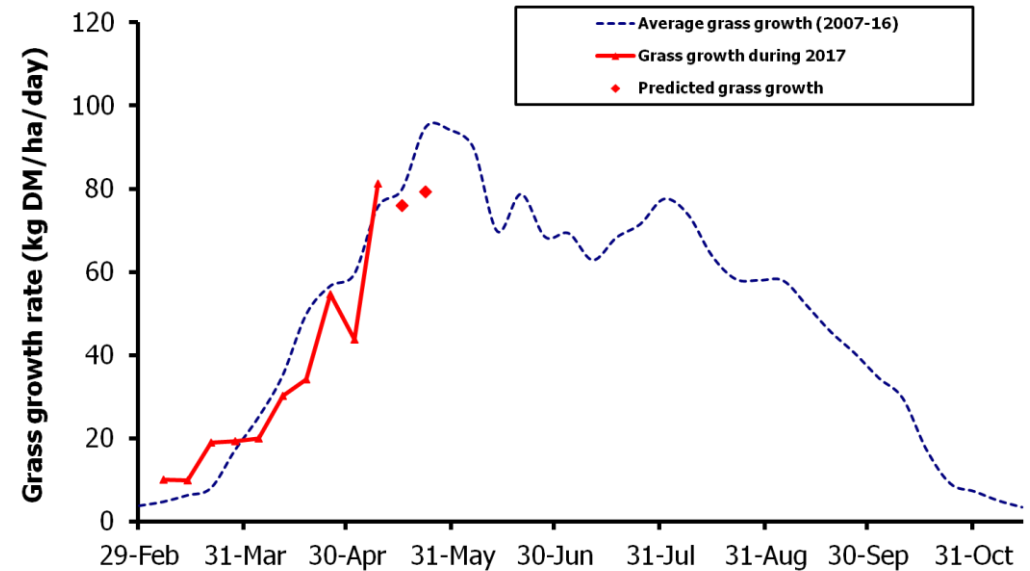
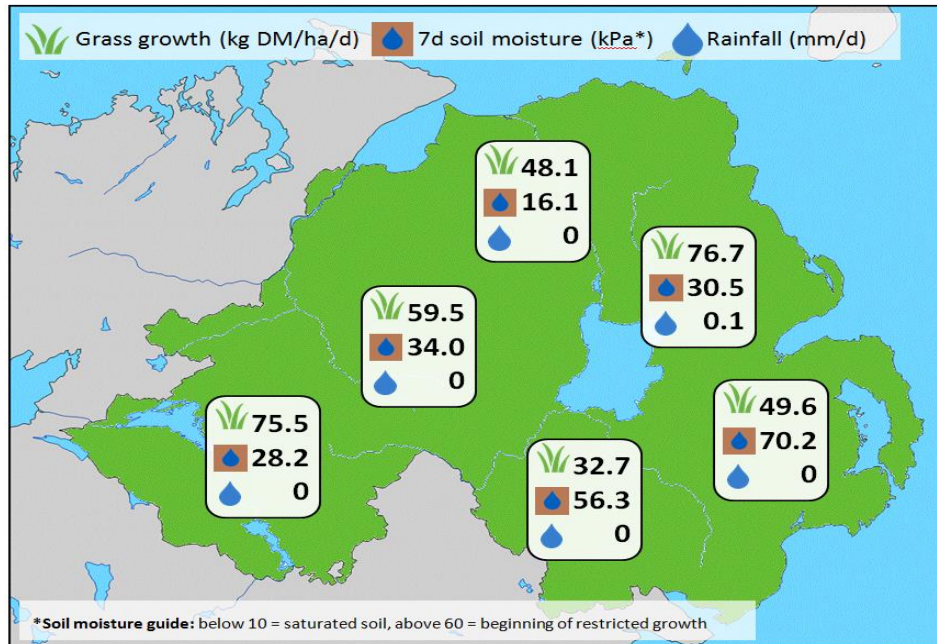


Week Beginning 8 May 2017



MANAGEMENT NOTES:

- With good weather dominating this past week, large differences in grass growing conditions are now evident across the Province.
- In western areas growth rates have surged and surpluses are almost inevitable on farm. Take all opportunities to graze paddocks out cleanly and consider closing out paddocks with covers over 3,000kg DM/ha.
- In eastern areas severe soil moisture deficits are now evident causing growth to plummet. Recently grazed paddocks are showing the largest reduction in growth rates with heavier grass covers helping retain soil moisture. If possible, extend the rotation length by introducing extra area or consider supplementation.
- For the latest grass and weather info visit agrisearch.org/GrassCheck

Grass Growth (kg DM/ha/day)		Grass Quality	
		GrassCheck plots	On-farm
Dairy farm 7d average*	63.6	DM (%)	18.7
Beef farm 7d average*	43.7	ME (MJ/kg DM)	12.1
GrassCheck plots#		CP (%)	19.6
Previous 3 weeks	81.3	WSC (%)	16.1
Forecast 7 days	75.9		
Forecast 14 days	79.2		

*On-farm grass growth data supplied by AgriNet

GrassCheck plots receive 270 kgN/ha/year

