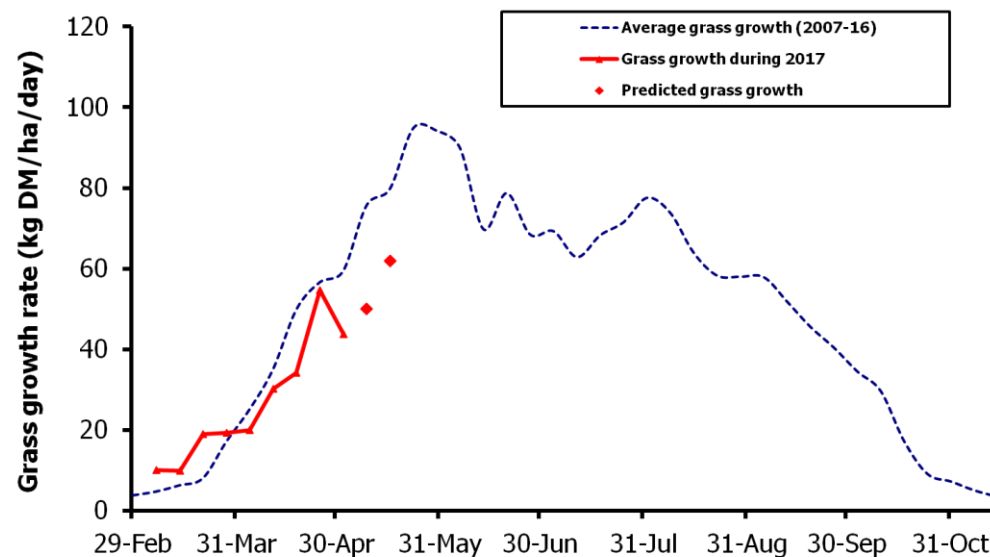
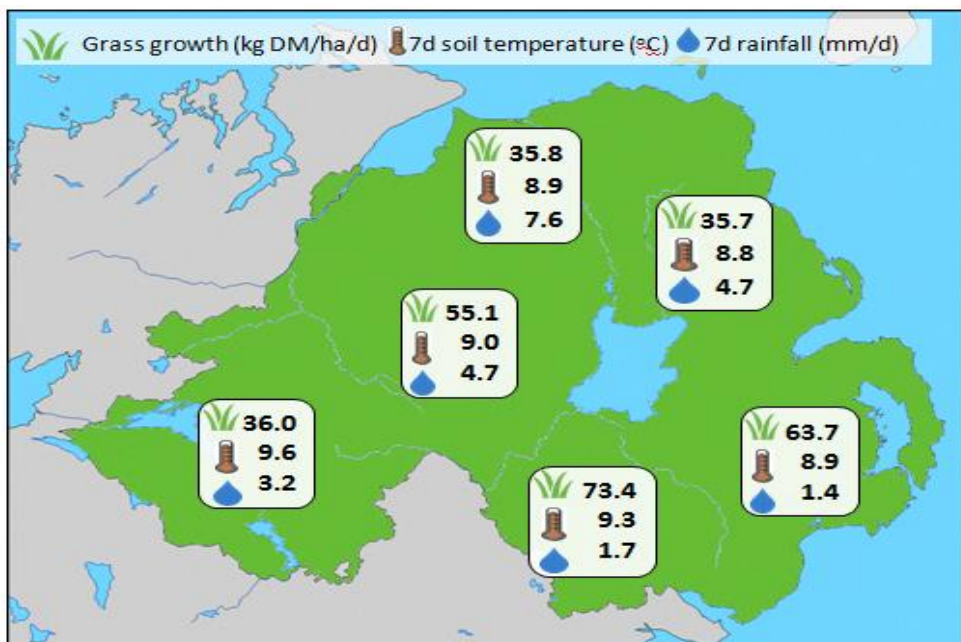


## Week Beginning 1 May 2017



### MANAGEMENT NOTES:

- The drop in air temperatures last week have lower grass growth rates by 11kg DM/ha/day on the GrassCheck plots and across many of our monitor farms.
- However dry conditions have prevailed across much of the Province, and coupled with high grass sugar content, ideal conditions are present for taking high covers out of the rotation.
- With warmer, drier conditions set to continue, growth rates are expected to rise again this coming week. Some early signs of drought stress have been evident in eastern areas and may start to check growth in places.
- Keeping fertiliser applications up to date and measuring regularly will be key to capitalising on the expected increase in growth in coming weeks.
- For the latest grass and weather info visit [agrisearch.org/GrassCheck](http://agrisearch.org/GrassCheck)

Grass Growth (kg DM/ha/day)		Grass Quality	
		GrassCheck plots	On-farm
Dairy farm 7d average*	50.4	DM (%)	17.6
Beef farm 7d average*	60.8	ME (MJ/kg DM)	13.3
<b>GrassCheck plots<sup>#</sup></b>		CP (%)	21.6
Previous 3 weeks	43.7	WSC (%)	19.5
Forecast 7 days	50.0		
Forecast 14 days	61.9		

\* On-farm grass growth data supplied by Agrinet

\* On-farm data for week ending 28/04/17

<sup>#</sup> GrassCheck plots receive 270 kgN/ha/year

