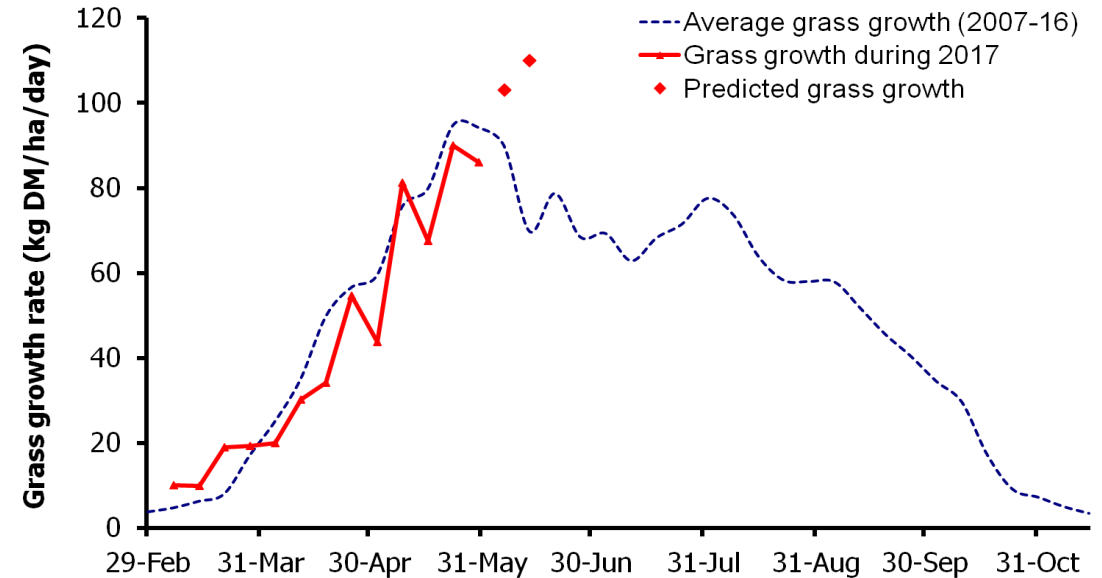
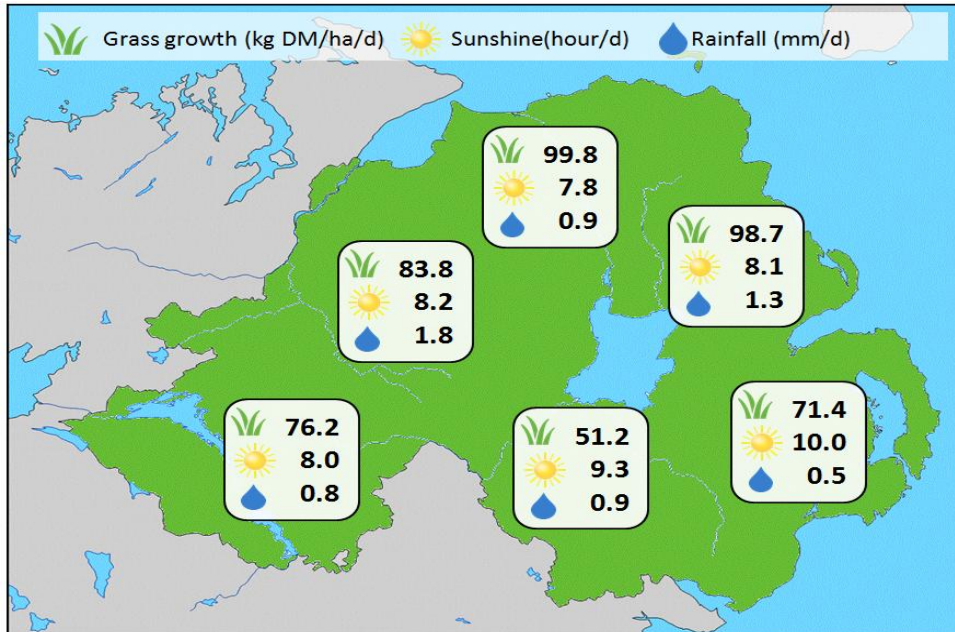


## Week Beginning 29 May 2017



Grass Growth (kg DM/ha/day)		Grass Quality	
		GrassCheck plots	On-farm
Dairy farm 7d average*	84.6	DM (%)	18.0
Beef farm 7d average*	72.7	ME (MJ/kg DM)	11.0
<b>GrassCheck plots<sup>#</sup></b>		CP (% DM)	19.4
Previous 3 weeks	74.0	WSC (% DM)	12.1
Forecast 7 days	103		
Forecast 14 days	110		

### MANAGEMENT NOTES:

- Growth rates continue to improve in eastern parts of the province with increasing amounts of rainfall in the past week, whilst growth remains strong in other areas.
- Looking forward, growth is expected to continue to rise for the next few weeks as soils moisture levels correct. Continue to monitor growth regularly and remove additional covers as soon as possible to bring paddocks back into the rotation.
- With grass well into the reproductive period in most parts of the country, quality can be difficult to maintain and residuals hard to achieve. Fibre contents have also been steadily increasing in swards. Consider pre-mowing this rotation to boost quality in later rounds.
- For the latest grass and weather info visit [agrisearch.org/GrassCheck](http://agrisearch.org/GrassCheck)

\*On-farm grass growth data supplied by Agrinet

<sup>#</sup> GrassCheck plots receive 270 kgN/ha/year

