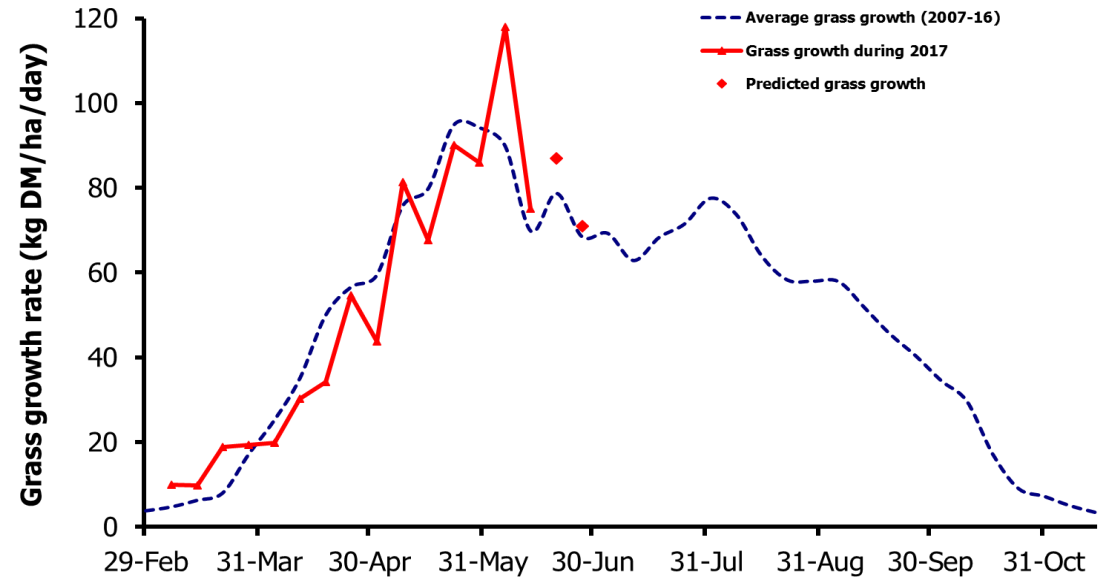
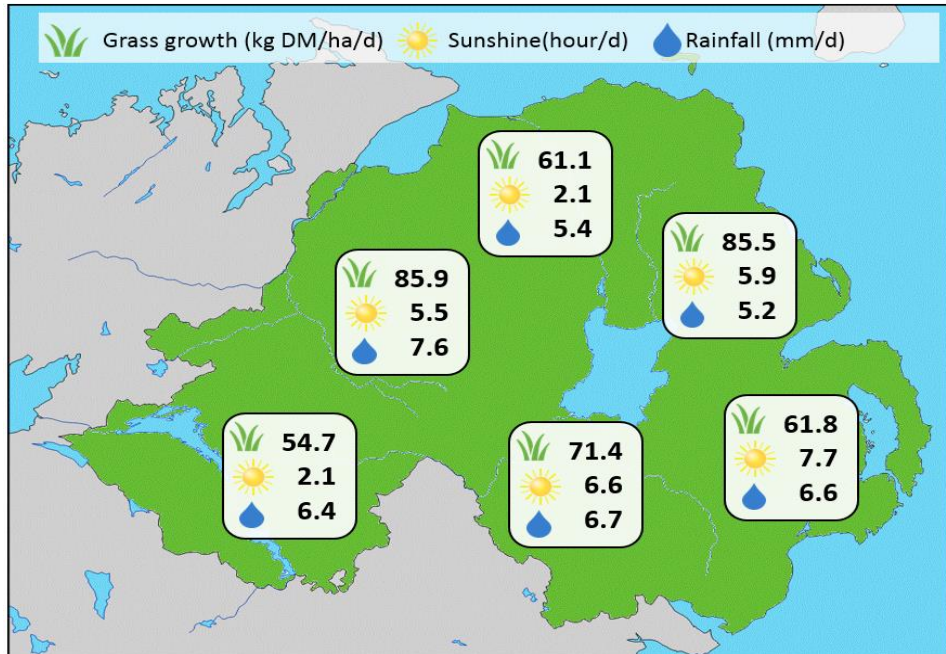


Week Beginning 12 June 2017



MANAGEMENT NOTES:

- Heavy rainfall and lower than expected night time temperatures have caused grass growth to fall back sharply this week both on the GrassCheck plots and farms however growth is expected to remain around the seasonal average.
- Although ME contents have stabilised after heading, the lower dry matter contents may still hinder grass dry matter intakes. On wetter farms, this has coincided with more difficult grazing conditions and delayed fertiliser application.
- Using multiple gateways and tracks will help ensure continued access to grass, with better grazing conditions expected early into next week. Consider pre-mowing to keep on top of sward quality.
- For the latest grass and weather info visit agrisearch.org/GrassCheck

Grass Growth (kg DM/ha/day)		Grass Quality	
		GrassCheck plots	On-farm
Dairy farm 7d average*	73.6		
Beef farm 7d average*	67.2		
GrassCheck plots#			
Previous 3 weeks	75		
Forecast 7 days	87		
Forecast 14 days	71		
		DM (%)	16.3
		ME (MJ/kg DM)	11.6
		CP (% DM)	21.0
		WSC (% DM)	12.3

*On-farm grass growth data supplied by AgriNet

GrassCheck plots receive 270 kgN/ha/year

