



RV Corystes

Vessel Specification Sheet

Versatile Research Vessel available for charter

The R.V. Corystes provides a capable and versatile platform from which a wide range of survey operations can be supported. The vessel is operated out of Belfast by Heyn Engineering for the Agri-Food and Biosciences Institute (AFBI).

The vessel is routinely used for a variety of applications including:

- Fisheries research using towed gear in order to sample populations of fish, shellfish and plankton.
- Deployment and recovery of Autonomous Underwater Vehicles (AUV), marine monitoring buoys and seabed deployed systems.
- A diverse range of acoustic and seabed mapping activities.

Key Features and Capabilities:

- Wet and Dry labs
- Stern A-frame with 7 m clearance (capacity 7 tonnes)
- Accommodation for 11 scientists
- ROV support
- Silent running
- Capacity to carry containerised laboratories





Main Dimensions

Length OA	52.25m
Beam	12.8m
Freeboard to working deck	2.5m
Full Load Draft	5m
Full Load Displacement	1550 tonnes
Gross tonnage	1280 tonnes
Free Working Deck Area	250m ²

Electrics

Main propulsion	2x diesel-electric A.C. generators, raft mounted, producing producing 2000kW at 750rpm. Emergency / harbour generator
Bow thruster	White Gill unit driven by a 450kW motor providing 4.3t of thrust at 600 rpm. 360° thrust for station keeping
Electrics	Auxiliary generating sets provide electrical power at 660V AC, 415V AC, 240V AC and 24V DC. Clean laboratory electrical supply.

Range

Cruising range	9000 nautical miles
Cruising speed	10 knots
Maximum speed	12 knots
Nominal Endurance	20 days
Fuel consumption	Transit 4 tonnes per day. Survey 2 / 3 tonnes per day. In Port 1 tonne per day.

Propulsion

Bow Thruster	From above
Main propulsion	2x electric D.C motors, 1200kW tandem mounted

Accommodation

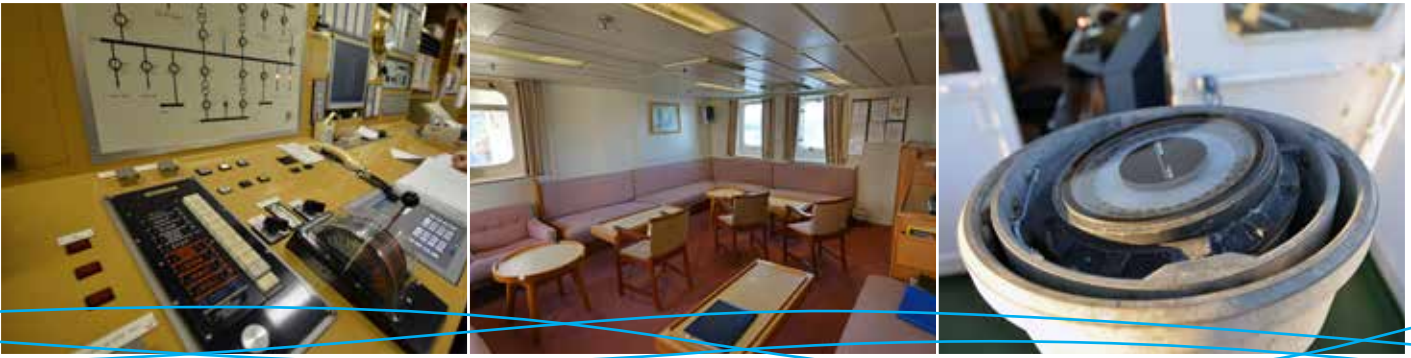
Officers	7 persons
Other crew	9 persons
Scientists	9 / 11 persons in 9 cabins
Air Conditioned	Yes
Communal Areas	2x lounges with digital TV, DVD.
Gym	Rowing machine and exercise bike

Deck Machinery

A-Frames	Stern – SWL 7 tonnes, 7m clearance, 2m outreach Starboard – SWL 2 tonnes, 7m clearance, 6m outreach
Cranes	3x Guerra 20 tonne @ 1m marine cranes
Trawl winches	2x Norwinch TD-11-90 low-pressure. 1000m x 24mm warps controlled by Scantrol auto trawl system. 1x Norwinch 7 tonne net drum
Gilson Winches	2x Norwinch MV-4.5
Scientific / Survey Winches	1x Lebus Double Drum Hydrographic Slip-ring Winch 1000m Cable. 1x Lebus Double Drum Survey Winch. 1000m wire / Cable.

Acoustic Equipment

Simrad EK 60	38kHz, 120kHz split beam transducers
Simrad SH80 Fishing Sonar	110 kHz to 122k Hz Scientific Option
Scanmar Net Monitoring.	Scanmar ScanBas System Hull Transducer



Laboratory Areas

Biological Wet Lab	24m ² , fresh and seawater, Marel HF balances (1g-60kg). Fish sorting station. Blast Freezer 16m ³ . Refrigerated Holding Store 16m ³ .
Multi-Purpose Dry Lab	27m ² , freshwater sink, refrigerators, workstations for rosette deployment. Transas Plotter slave display. Seabird SBE 21 Thermosalinograph.
Plot/Control Lab	4m ² . Transas Plotter slave display
Acoustic/oceanographic control lab	13m ² Olex Plotter. Slave Display for Scanmar and Fishing Sonar. EK60 Work-station. Transas Plotter Slave Display
Isotope Laboratory in 10 ft container.	Lloyds Specification.
Deck locations for containerised laboratories 1 x 10ft and 1 x 20ft. [metric needed]	Support systems: 230 AC, seawater, freshwater.

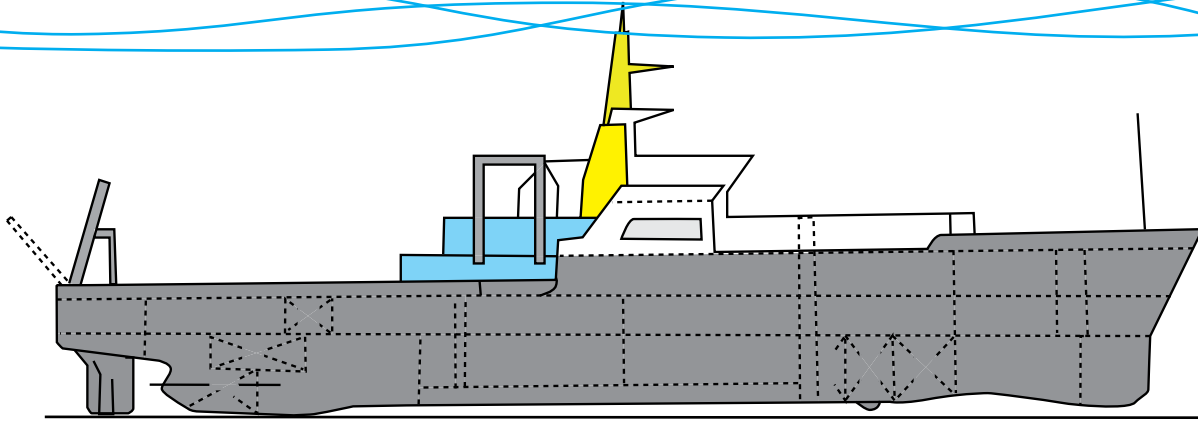
Special features

Moon Pool (fore and aft)	1x 0.35m and 1 x 0.80m diameter. Equipment deployment
Silent running	Complies with the ICES 209 criteria for acoustic surveying silent ships
Passive anti roll system	
Rescue Boats.	DOTi

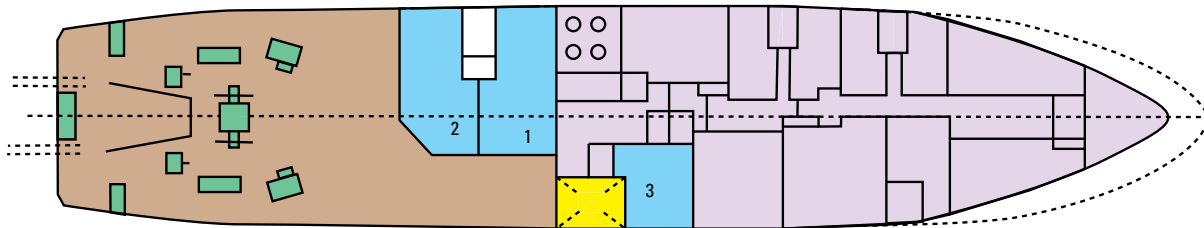
Contact

Dr W W Crozier,
Fisheries and Aquatic Ecosystems Branch
Agri-Food and Biosciences Institute
Newforge Lane
Belfast BT9 5PX
Northern Ireland, UK

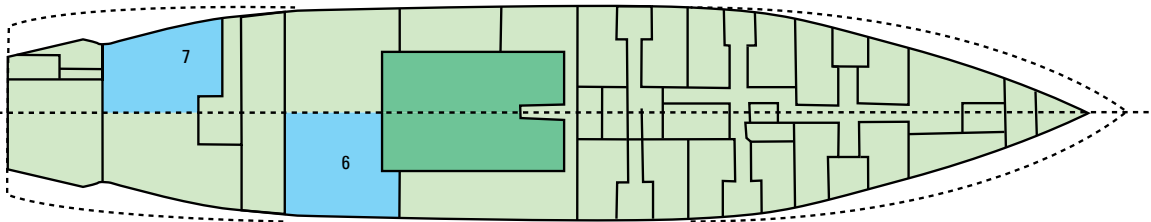
email: info@afbini.gov.uk
tel: +44 (0) 2890 255 472
fax: +44 (0) 2890 255 004



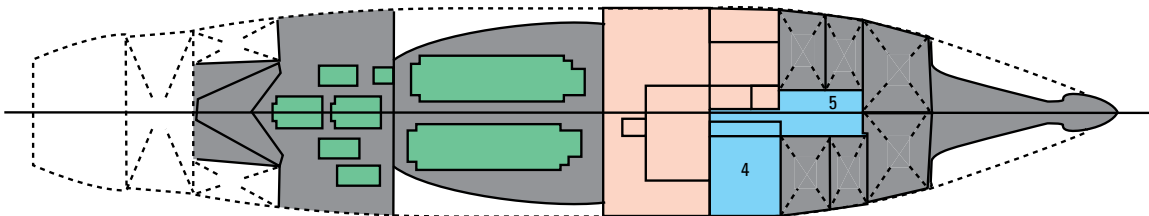
Side Elevation



Main Deck



Lower Deck



Tank Top

- 1 Dry Laboratory
- 2 Wet Laboratory
- 3 Acoustic Laboratory
- 4 Gym

- 5 Acoustic Transducer Space
- 6 Machinery Control Room
- 7 Net Store

Deck layout of the RV Corystes

