

IDSure Blood Card Collection Instructions

Instructions for Farmers

**Kit contents: 1 x Instruction Sheet.
1 x Job Sheet.
AFBI Blood Cards (one card per animal sampled)
Ear prick blood lances (one per animal sampled)
Duplicate Barcode labels.
1 x AFBI Pre-addressed small envelope.**

1. Check the above contents to ensure you have all the appropriate consumables necessary to complete blood sampling.
2. Identify the animals which you intend to sample.
3. Fill in the Sampling Job Sheet with your details.
4. In the 'Sample Details' table, fill in the correct ear tag number and local identifier (if any) for the animals you are sampling.
5. Also- **if appropriate**- in the 'Sample Details' table, indicate the relationship both animals have to each other, Calf / Dam.
6. Take a fresh Blood Card and ear prick blood lance.
7. Wear a pair of gloves.
8. On the back of one of the animal's ears, search for a vein. Upon close inspection and some massaging, these should be clearly visible.
9. Remove the round plastic stopper on one end of the lance to expose the blade.

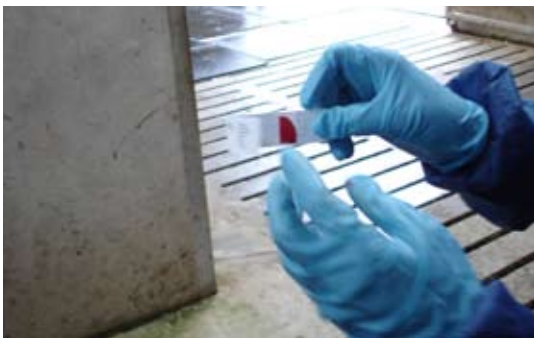
10. Prick the veins on the back of the animal's ear with the lance until a small blob of blood appears.
11. Open the folded blood card to expose the blotting type paper attached to the card. Using **only** the blotting paper section, soak up the blob of blood from the animal's ear.



12. Permit the blood spot to dry on the paper, then fold over the cover. On the reverse side of the blood card, affix one of the thick barcode labels with the word 'BLOOD' printed on it.

IDSure Blood Card Collection Instructions

Instructions for Farmers



13. Peel off the thin barcode label (has 'FORM' printed on it) which bears the same barcode number as the one you have attached to the blood card. Affix this barcode to the Parentage test job sheet in the sample details table's second 'Barcode'



column. ***Make sure that the barcode is put in the correct box next to the animal you have just sampled's ear tag details***

14. Repeat the process described above for the second animal sample.
15. IMPORTANT – when sampling more than one animal, it is essential that you use a new ear prick lance and blood card.

This is to avoid cross contamination of samples. If the gloves you have worn to sample the first animal have any of its blood on them, you should either wash this off with water, or change to a new pair prior to sampling another animal.

Failure to comply with these measures will render the DNA test meaningless.

16. When all blood cards have been processed and all barcodes applied, please seal them in the plastic bag provided. Put this bag into the small envelope supplied, affix a stamp and post it. Please ensure that you also include the completed job sheet with the blood cards.
17. Upon completion of the DNA test and determination of the parental relationship or otherwise between the animals sampled, an AFBI representative will contact you, the Authorised Veterinary Inspector at the contact details you have supplied on the job sheet form.